

# HUIA RANGE SCHOOL BLOCK A VERANDAH ALTERATIONS

2 Cole Street  
Dannevirke

for  
Huia Range School Board of Trustees

## DRAWINGS

<u>Page No</u>	<u>Description</u>	<u>Scale</u>
Page 1	Site Plan	1:750
Page 2	Existing Floor Plan	as shown
Page 3	Proposed Floor Plan	as shown
Page 4	Roofing Plans	as shown
Page 5	Deck Sub-floor Framing Plan	1:50
Page 6	Verandah Cross Section	1:20
Page 7	Verandah Cross Section Details	as shown
Page 8	Exterior Elevations	1:100
Morrison Design; Engineering Drawing -S1		1:250
Morrison Design; Engineering Drawing -S2		1:250
Morrison Design; Engineering Drawing -S3		1:20
Morrison Design; Engineering Drawing -S4		1:10



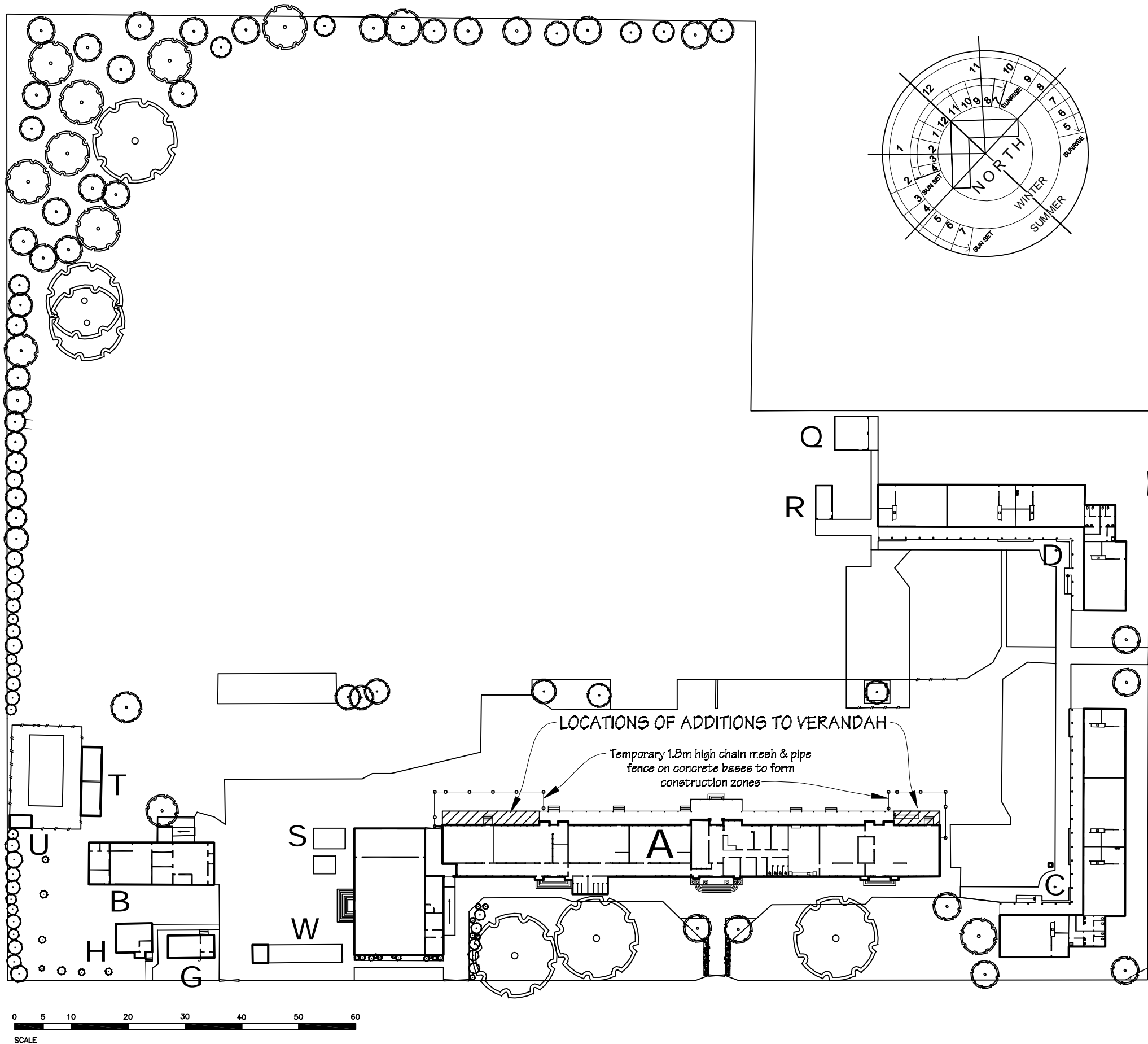
I R Group Ltd

Design - Project Management - Planning


Phone- Office 04 526-7711  
 Mobile- Ian 021-427.347  
 Mobile- Stephen 027-3355889  
 Email- [ian@irgroup.co.nz](mailto:ian@irgroup.co.nz)  
[steve@irgroup.co.nz](mailto:steve@irgroup.co.nz)  
 Web- [www.irgroup.co.nz](http://www.irgroup.co.nz)

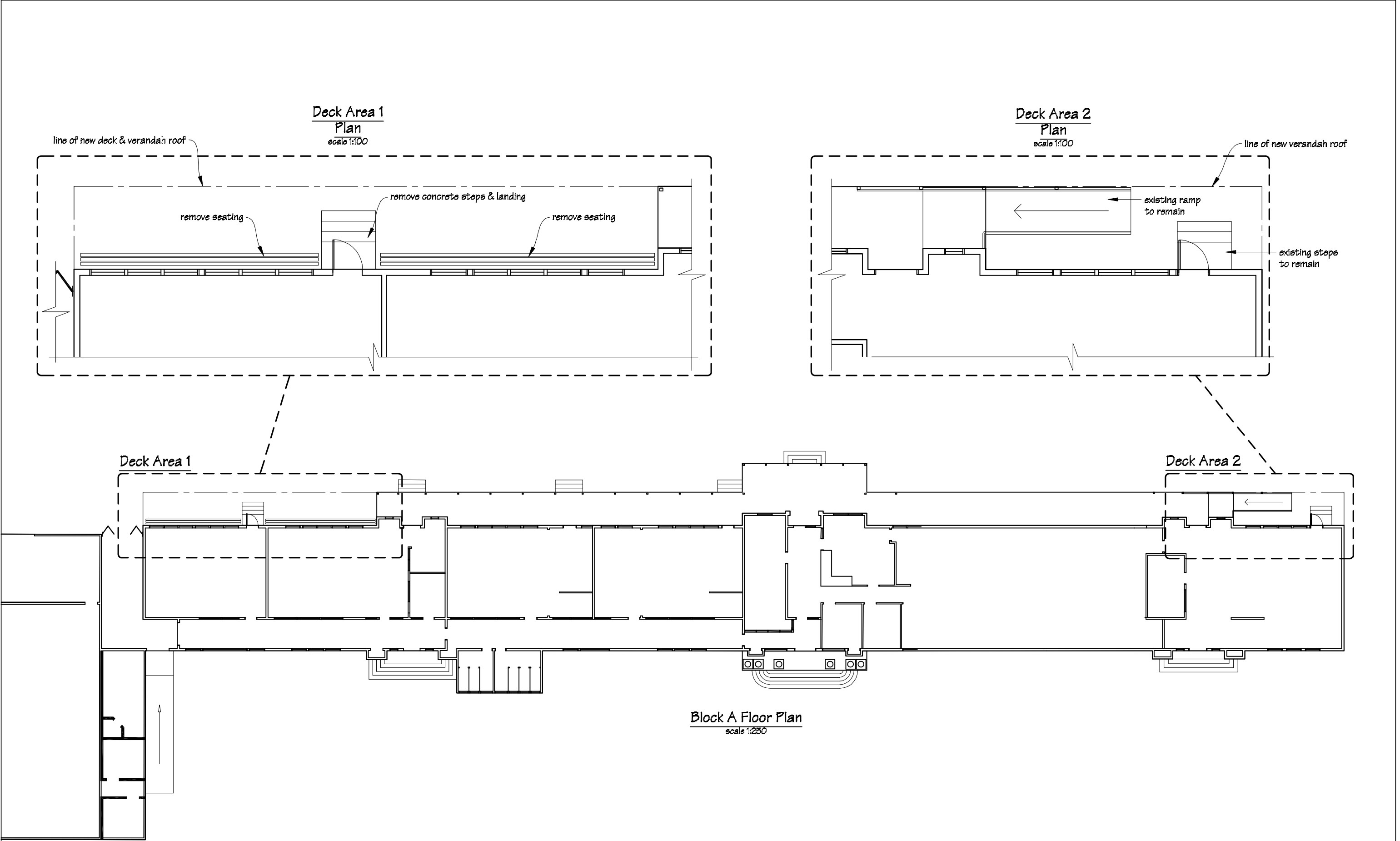
Issue Date  
21-07-2017


Pricing/Building  
Consent  
Drawings



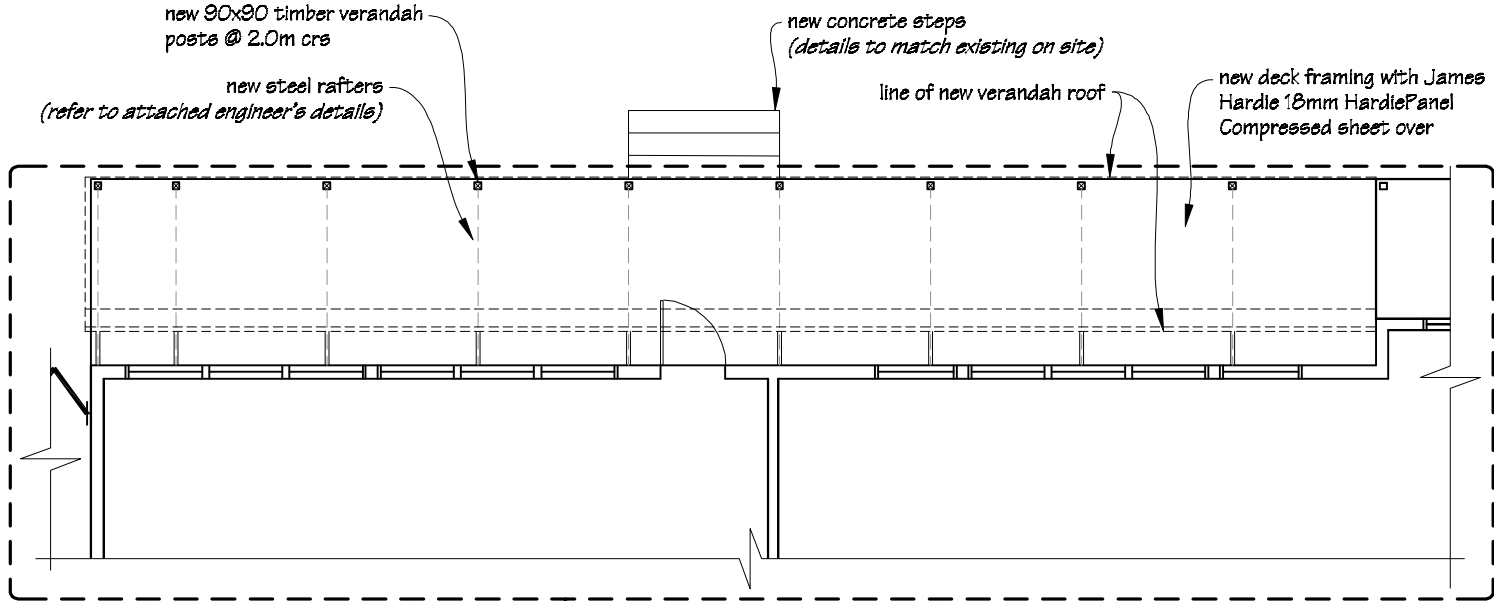
LEGAL INFORMATION
Part SS 67 Town of Dannevirke & SS Town of Dannevirke
ADDRESS
Huia Range School 2 Cole Street Dannevirke
SITE INFORMATION
Exposure Zone B. Earthquake Zone 3. Wind Zone - Very High

 IR Group Ltd <small>Design - Project Management - Planning</small>	Phone- Office 04 526-7711	Huia Range School 2 Cole Street Dannevirke	PROJECT  Block A Verandah Alterations	DRAWING TITLE  Site Plan	REVISIONS	Scale 1:750	Preliminary Drawings
	Mobile- Ian 021-427.347				<u>No</u> <u>Date</u> <u>Description</u>	Date 21/07/17	
	Mobile- Stephen 027-3355889					Original sheet size A5	
	Email- <a href="mailto:ian@irgroup.co.nz">ian@irgroup.co.nz</a>					Drawn S.T.	
	<a href="mailto:steve@irgroup.co.nz">steve@irgroup.co.nz</a>					Sheet No 1 of 8	
Web- <a href="http://www.irgroup.co.nz">www.irgroup.co.nz</a>					Dwg Ref 1	Do not scale from drawings. Check all dimensions on site.	

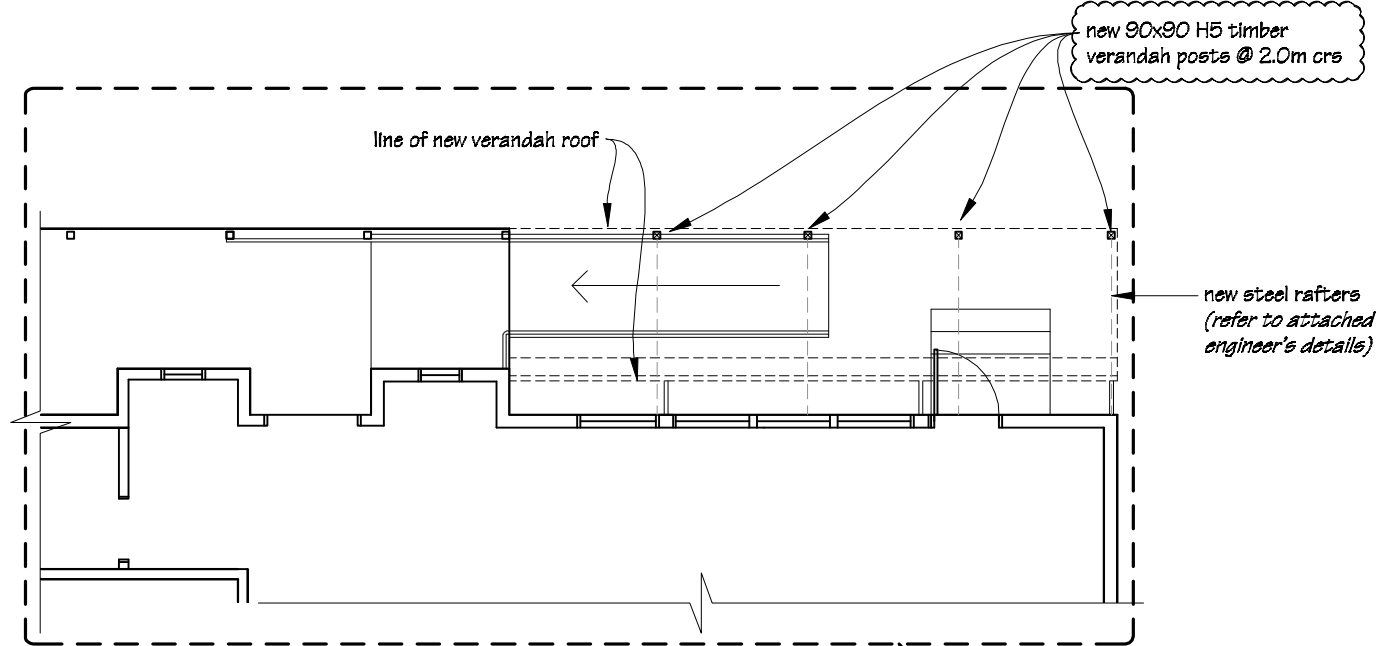


 IR Group Ltd <small>Design - Project Management - Planning</small>	Phone- Office 04 526-7711	Huia Range School 2 Cole Street Dannevirke	PROJECT  Block A Verandah Alterations	DRAWING TITLE  Existing Floor Plan	REVISIONS	Scale	as shown	Preliminary Drawings		
	Mobile- Ian 021-427.347				<i>No</i>	<i>Date</i>	<i>Description</i>		Date	21/07/17
	Mobile- Stephen 027-3355889								Original sheet size	A3
	Email- <a href="mailto:ian@irgroup.co.nz">ian@irgroup.co.nz</a>								Drawn	S.T.
	<a href="mailto:steve@irgroup.co.nz">steve@irgroup.co.nz</a>								Sheet No	2 of 8
	<a href="http://www.irgroup.co.nz">www.irgroup.co.nz</a>								Dwg Ref	2
	Web-									

Deck Area 1  
Plan  
scale 1:100



Deck Area 2  
Plan  
scale 1:100




Deck Area 1

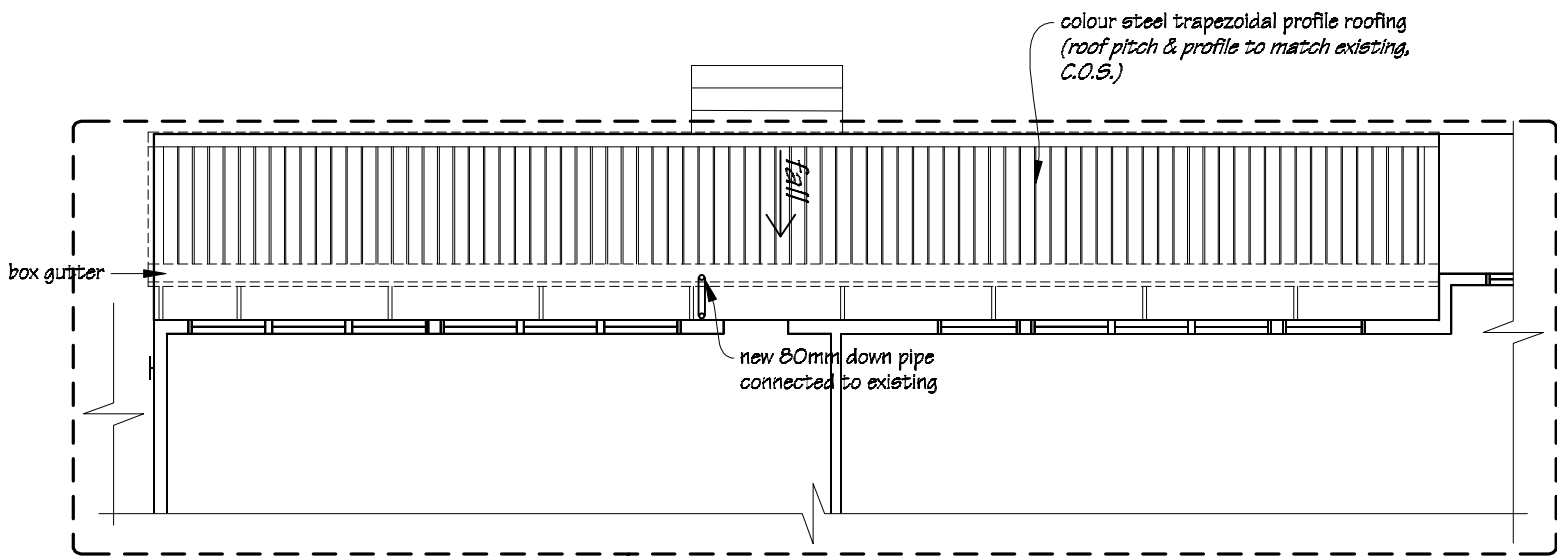
Deck Area 2

Block A Floor Plan  
scale 1:250

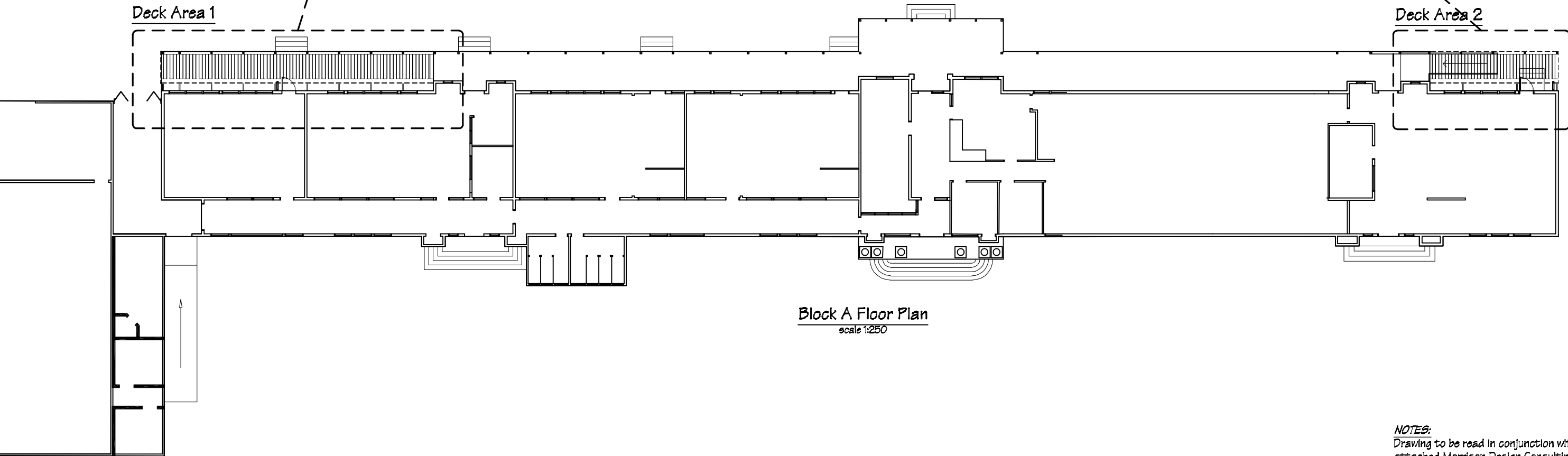
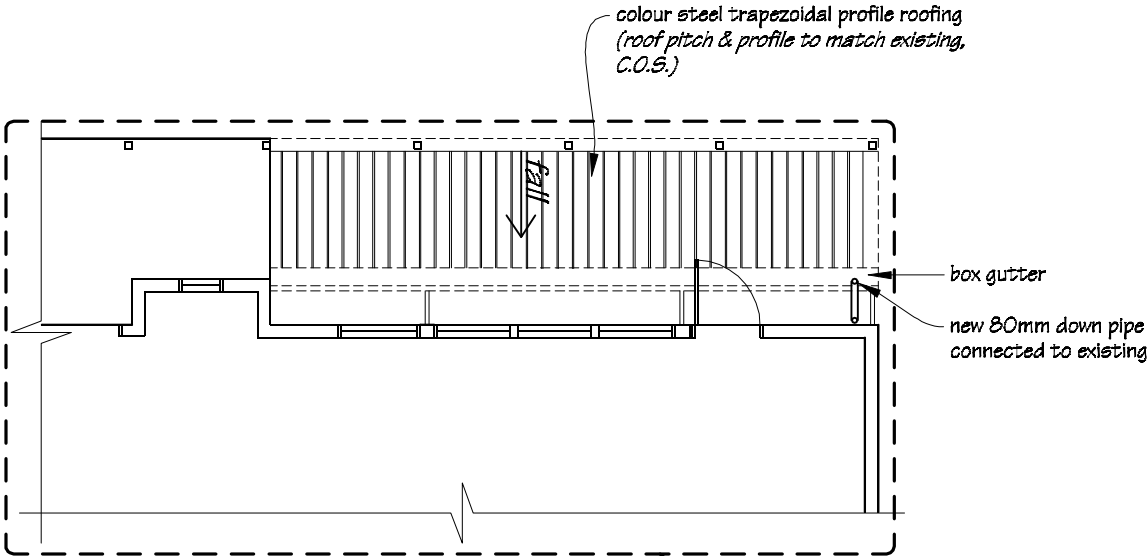
NOTES:  
Drawing to be read in conjunction with the attached Morrison Design Consulting Engineers drawing details.

 IR Group Ltd Design - Project Management - Planning	Phone- Office 04 526-7711	Huia Range School 2 Cole Street Dannevirke	PROJECT  Block A Verandah Alterations	DRAWING TITLE  Proposed Floor Plan	REVISIONS	Scale as shown	Preliminary Drawings
	Mobile- Ian 021-427.347				No Date Description	Date 21/07/17	
	Mobile- Stephen 027-3355889					Original sheet size A3	
	Email- ian@irgroup.co.nz					Drawn S.T.	
	steve@irgroup.co.nz					Sheet No 3 of 8	
Web- www.irgroup.co.nz					Dwg Ref 3	Do not scale from drawings. Check all dimensions on site.	

Deck Area 1  
Roofing Plan  
scale 1:100




Deck Area 2  
Roofing Plan  
scale 1:100

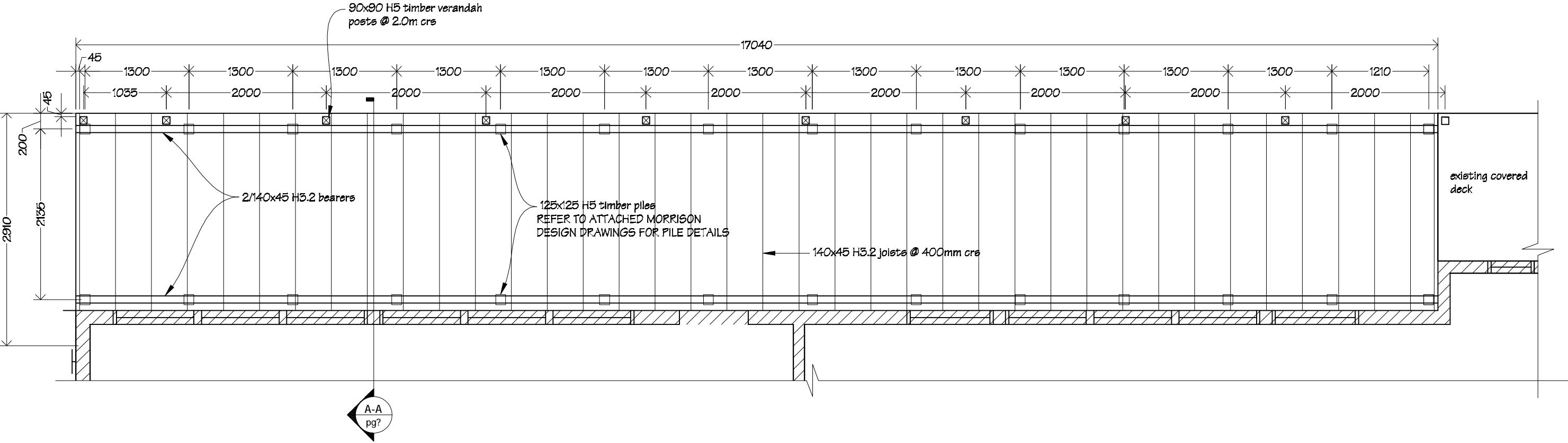


Block A Floor Plan  
scale 1:250


**NOTES:**  
Drawing to be read in conjunction with the attached Morrison Design Consulting Engineers drawing details.

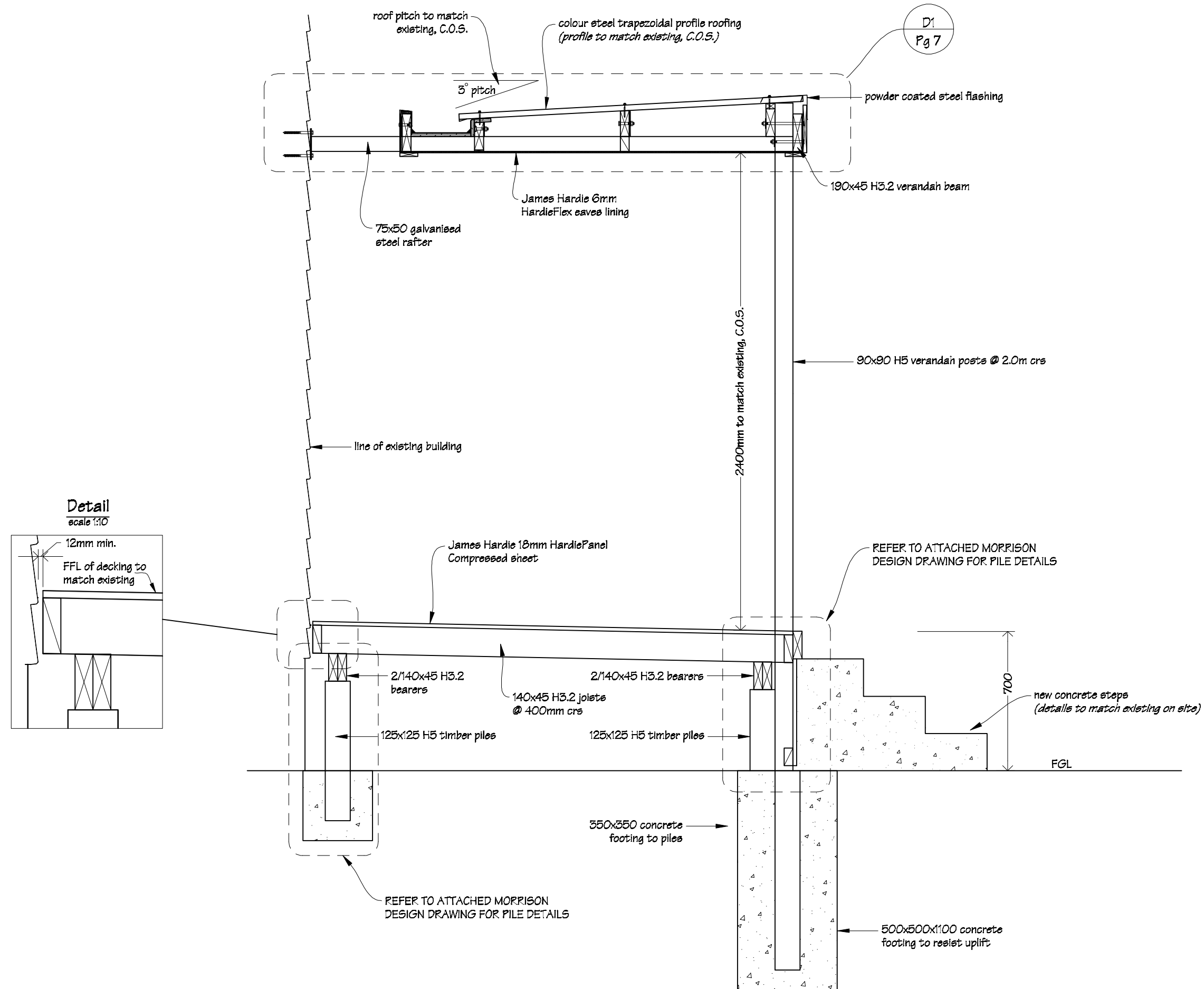
 IR Group Ltd <small>Design - Project Management - Planning</small>	Phone- Office 04 526-7711	Huia Range School 2 Cole Street Dannevirke	PROJECT  Block A Verandah Alterations	DRAWING TITLE  Roofing Plan	REVISIONS	Scale as shown	Preliminary Drawings
	Mobile- Ian 021-427.347				No Date Description	Date 21/07/17	
	Mobile- Stephen 027-3355889					Original sheet size A3	
	Email- <a href="mailto:ian@irgroup.co.nz">ian@irgroup.co.nz</a>					Drawn S.T.	
	Web- <a href="http://www.irgroup.co.nz">www.irgroup.co.nz</a>					Sheet No 4 of 8	
						Dwg Ref 4	Do not scale from drawings. Check all dimensions on site.

Deck Area 1  
Sub-floor Framing Plan




**NOTES:**  
Drawing to be read in conjunction with the  
attached Morrison Design Consulting  
Engineers drawing details.

 IR Group Ltd Design - Project Management - Planning	Phone- Office 04 526-7711	Huia Range School 2 Cole Street Dannevirke	PROJECT  Block A Verandah Alterations	DRAWING TITLE  Sub-floor Framing Plan	REVISIONS	Scale 1:50	Preliminary Drawings	
	Mobile- Ian 021-427.347				No Date Description	Date 21/07/17		
	Mobile- Stephen 027-3355889					Original sheet size A5		
	Email- ian@irgroup.co.nz					Drawn S.T.		Do not scale from drawings. Check all dimensions on site.
	steve@irgroup.co.nz					Sheet No 1 of 8		
	Web- www.irgroup.co.nz					Dwg Ref 1		



**NOTES:**  
Drawing to be read in conjunction with the attached Morrison Design Consulting Engineers drawing details.

 <b>IR Group Ltd</b> <small>Design - Project Management - Planning</small>	Phone- Office 04 526-7711	<b>Huia Range School</b> <b>2 Cole Street</b> <b>Dannevirke</b>	<b>PROJECT</b>  <b>Block A</b> <b>Verandah Alterations</b>	<b>DRAWING TITLE</b>  <b>Cross Section A-A</b>	<b>REVISIONS</b>			Scale 1:20	<b>Preliminary Drawings</b>
	Mobile- Ian 021-427.347				No Date Description	Date 2/07/17			
	Mobile- Stephen 027-3355889					Original sheet size A3			
	Email- ian@irgroup.co.nz					Drawn S.T.			
	steve@irgroup.co.nz					Sheet No 6 of 8			
	Web- www.irgroup.co.nz					Dwg Ref 6			

scale 1:8



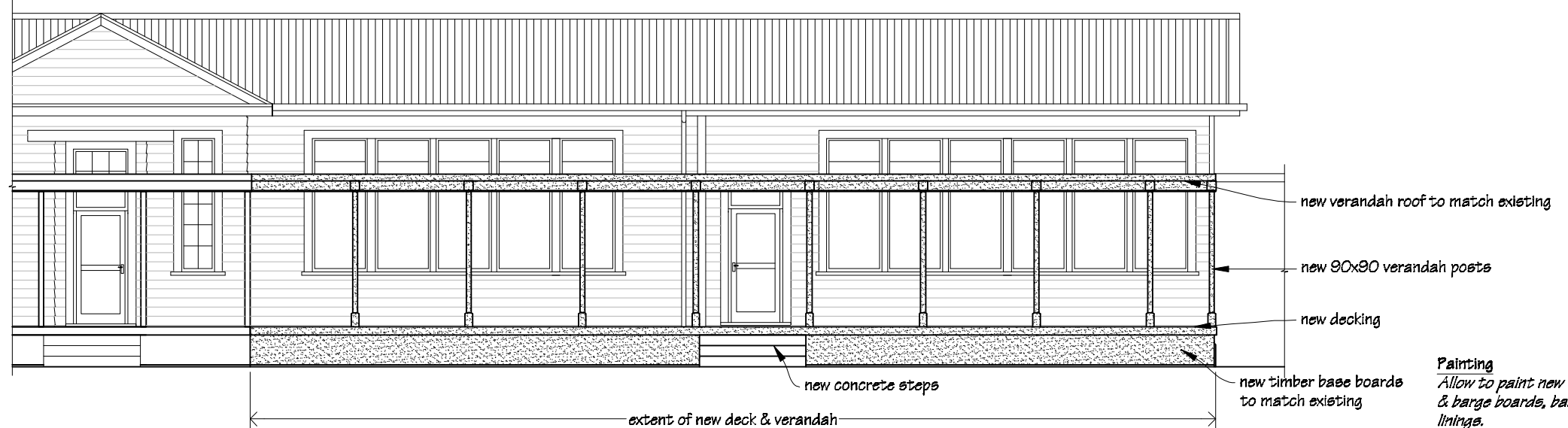
*Do not scale from drawings.  
Check all dimensions on site.*



Deck Area 1  
Existing Front Elevation



Deck Area 1  
Proposed Front Elevation

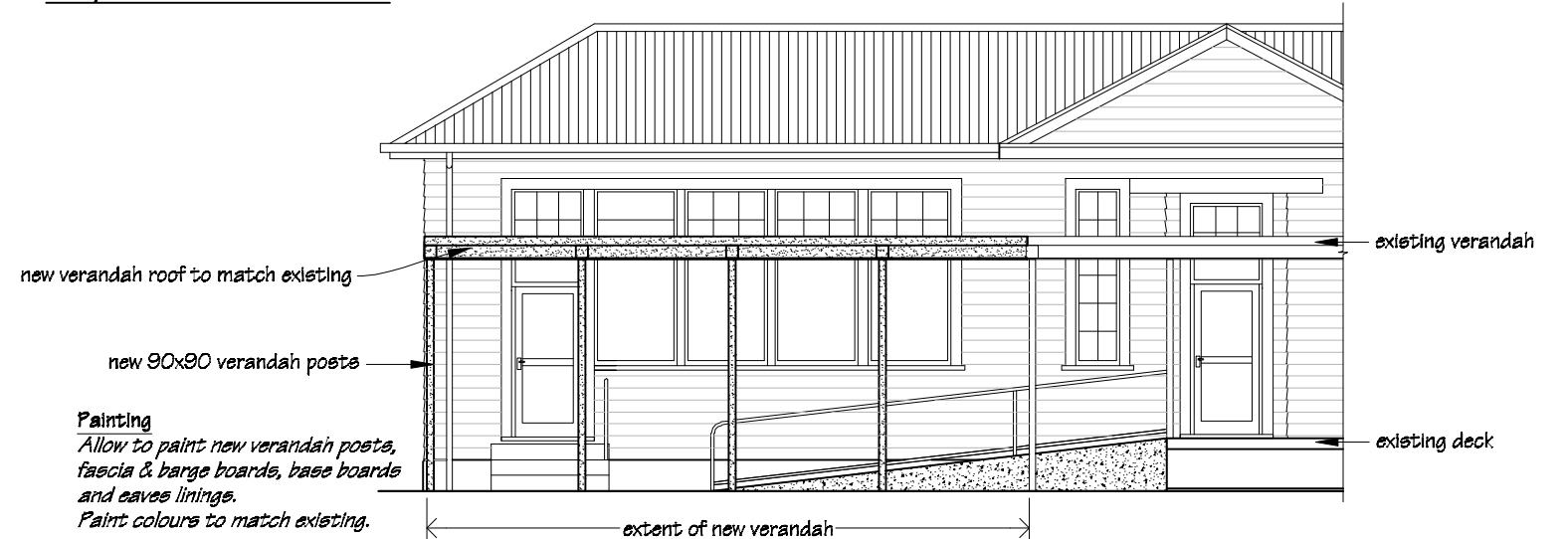


**Painting**  
Allow to paint new verandah posts, fascia & barge boards, base boards and eaves linings.  
Paint colours to match existing.

Deck Area 2  
Existing Front Elevation



Deck Area 2  
Proposed Front Elevation



**Painting**  
Allow to paint new verandah posts, fascia & barge boards, base boards and eaves linings.  
Paint colours to match existing.



Phone- Office 04 526-7711  
Mobile- Ian 021-427.347  
Mobile- Stephen 027-3355889  
Email- [ian@irgroup.co.nz](mailto:ian@irgroup.co.nz)  
[steve@irgroup.co.nz](mailto:steve@irgroup.co.nz)  
Web- [www.irgroup.co.nz](http://www.irgroup.co.nz)

Huia Range School  
2 Cole Street  
Dannevirke

PROJECT  
Block A  
Verandah Alterations

DRAWING TITLE  
Block A  
Part Front Elevations

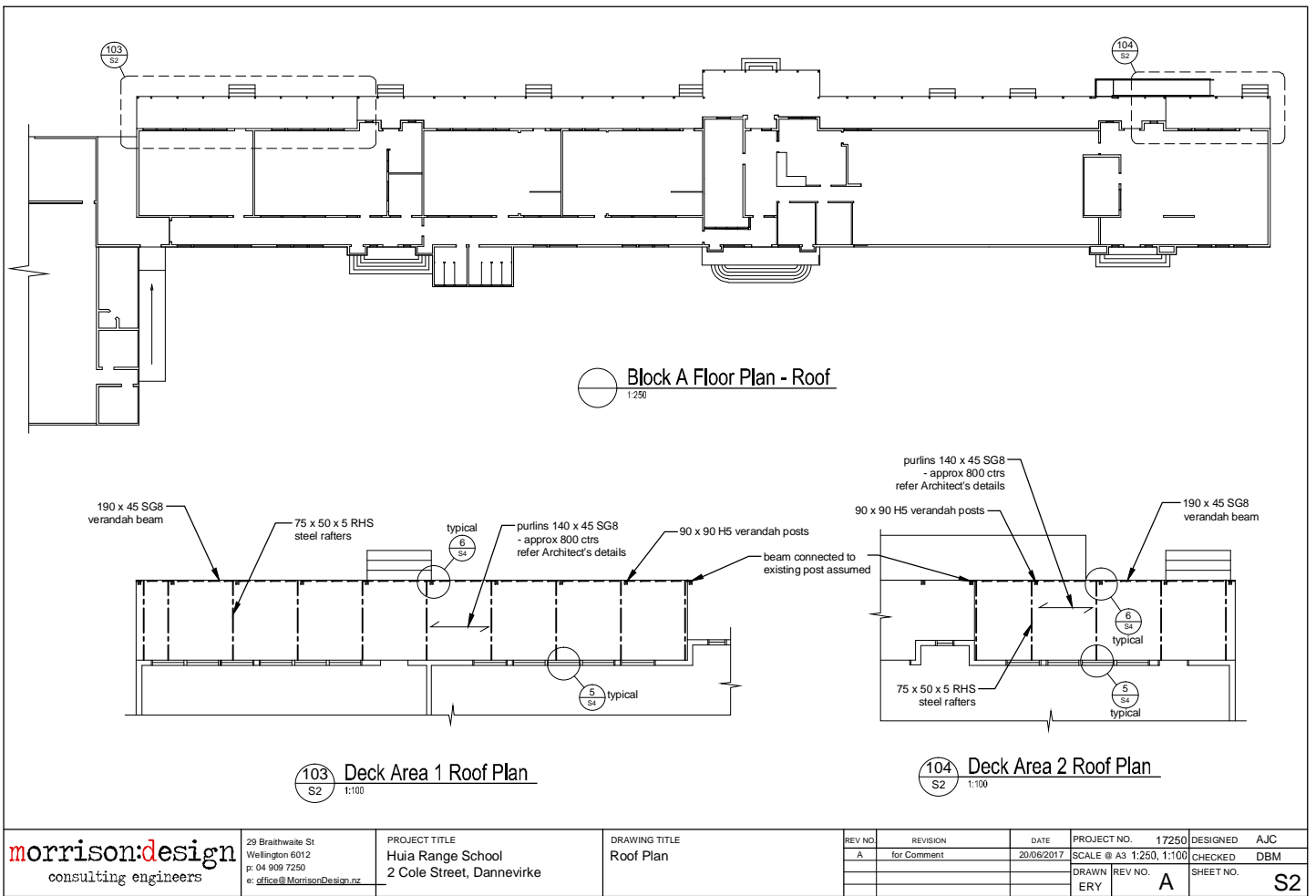
REVISIONS  
No Date Description

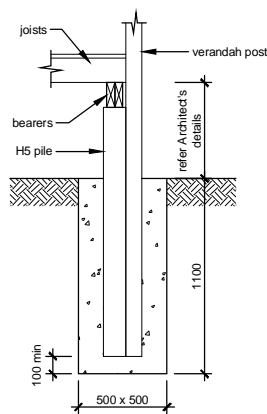
Scale 1:100  
Date 21/07/17  
Original sheet size A5  
Drawn S.T.  
Sheet No 8 of 8  
Dwg Ref 8

Preliminary Drawings

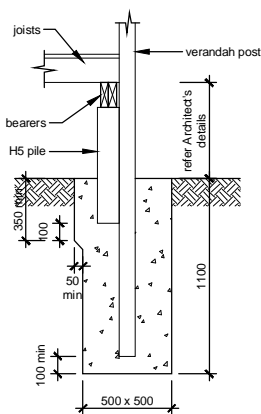
Do not scale from drawings.  
Check all dimensions on site.



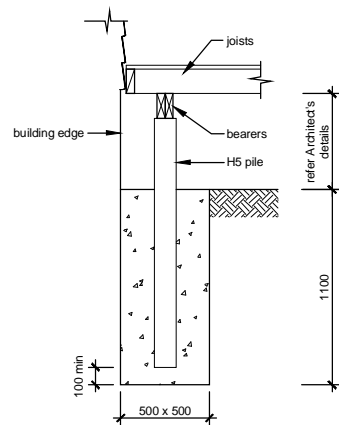




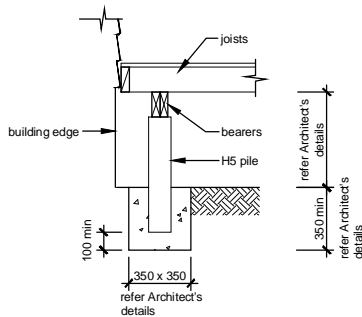
1 Anchor Pile / Post Footing Detail - Typical  
S1 1:20



2 Ordinary Pile / Post Footing Detail - Typical  
S1 1:20



3 Anchor Pile Footing Detail - Typical  
S1 1:20



4 Ordinary Pile Footing Detail - Typical  
S1 1:20

**Note:**  
Splice bearers to NZS 3604: 2011

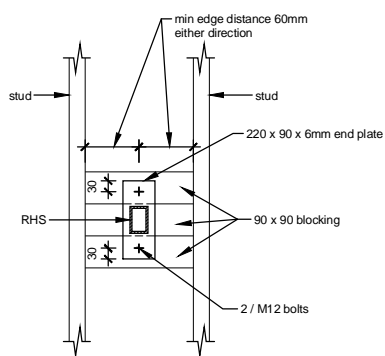
**morrison:design**  
consulting engineers

29 Braithwaite St  
Wellington 6012  
p: 04 909 7250  
e: office@morrisonDesign.nz

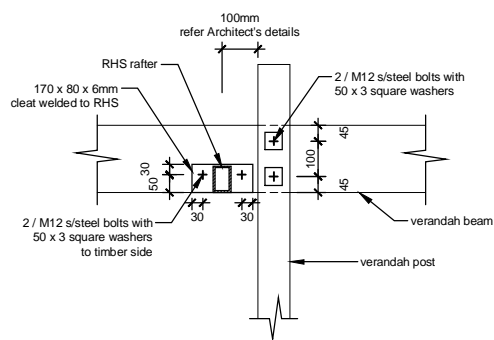
PROJECT TITLE  
Huia Range School  
2 Cole Street, Dannevirke

DRAWING TITLE  
Details (1)

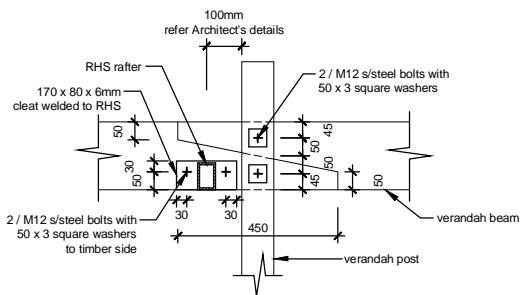
REV NO.	REVISION	DATE	PROJECT NO.	17250	DESIGNED	AJC
A	for Comment	20/06/2017	SCALE @ A3	1:20	CHECKED	DBM
			DRAWN	REV NO.	SHEET NO.	
			ERY	A		S3



5 RHS to Building Wall Detail - Typical  
S2 1:10



6 RHS to Verandah Post Detail - Typical  
S2 1:10



7 RHS to Verandah Post Detail - at Beam Splice  
S2 1:10

**morrison:design**  
consulting engineers

29 Braithwaite St  
Wellington 6012  
p: 04 909 7250  
e: office@MorrisonDesign.nz

PROJECT TITLE  
Huia Range School  
2 Cole Street, Dannevirke

DRAWING TITLE  
Details (2)

REV NO.	REVISION	DATE	PROJECT NO.	17250	DESIGNED	AJC
A	for Comment	20/06/2017	SCALE @ A3	1:10	CHECKED	DBM
			DRAWN	REV NO.		
			ERY	A	SHEET NO.	S4