

# NAENAE COLLEGE COURTS UPGRADE

910 High Street  
Lower Hutt

for  
Naenae College Board of Trustees

## DRAWINGS

<u>Page No</u>	<u>Description</u>	<u>Scale</u>
Page 1	Site Plan	1:1500
Page 2	Overall Existing Courts & Paving Plan	1:750
Page 3	Main Courts & General Area Spot Levels Plan	1:500
Page 4	Court Yard Spot Levels	1:250
Page 5	Court Yard Storm Water Drainage Plan	1:300
Page 6	Court Yard Paving Plan	1:300
Page 7	Court Yard New Court Markings	1:300
Page 4	New Astroturf, Basket Ball & Net Ball Courts Plan	1:300
Page 5	New Astroturf Net Ball Courts, Paving, Fencing & kerbing Plan	as shown
Page 6	New Fencing, Dish Channel & Landscaping Plan	1:300
Page 7	Proposed Storm Water Drainage Plan	1:350
Page 8	Main Courts; New Artificial Net Ball & Tennis Courts, Paving, Fencing & Kerbing Plan	as shown:
Page 9	General Area; Dish Channel & Landscaping Plan	1:300
Page 10	General Area; Proposed Storm Water Drainage Plan	1:350
Page 11	Bin Bay Details	1:40
Page 12	3.0m Pipe & Mesh Fence Details	1:16
Page 13	Paving, Dish Channel and Kerb & Channel Details	1:10



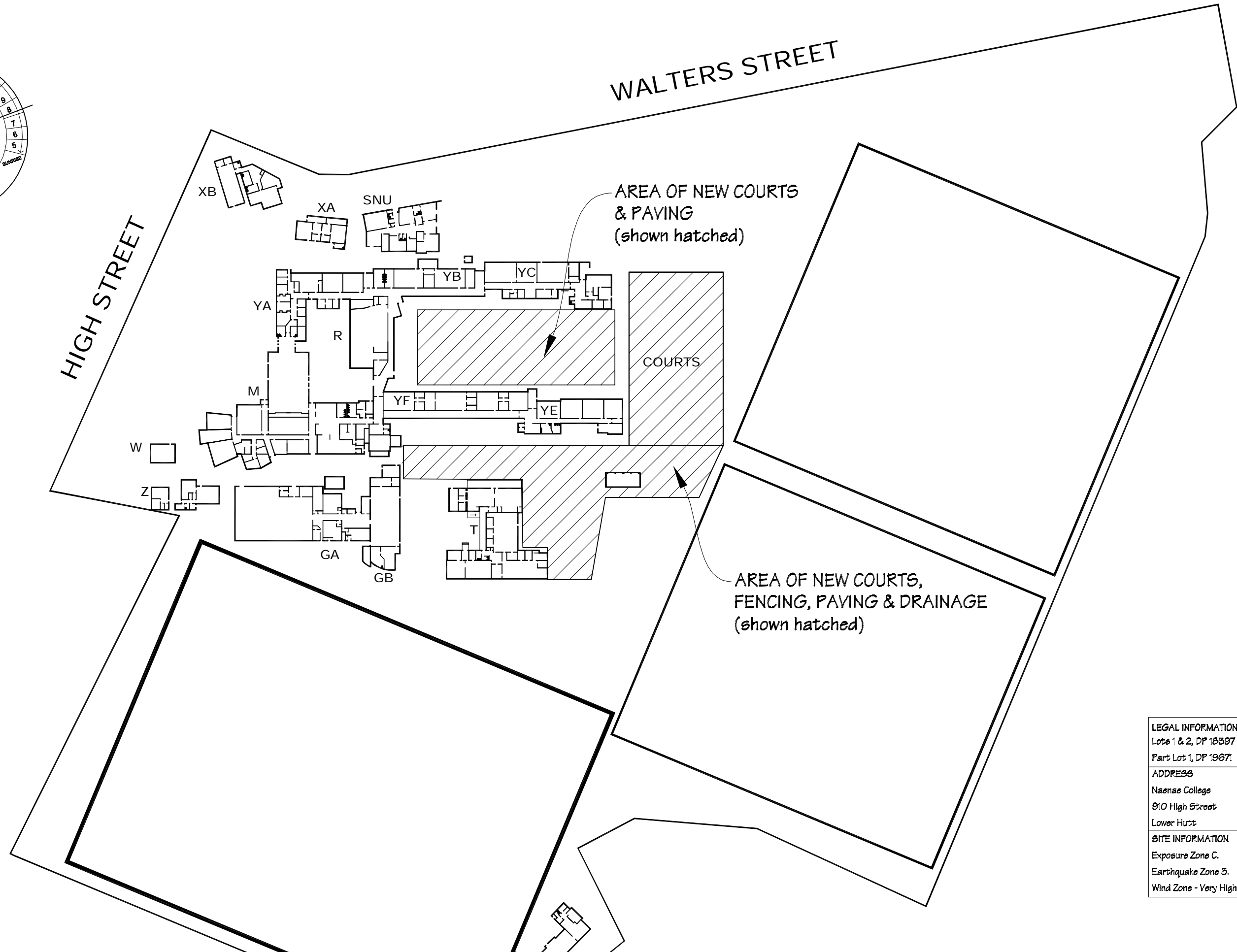
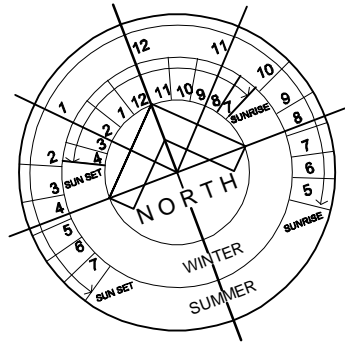
IR Group Ltd

Design - Project Management - Planning


Phone- Office 04 526-7711  
 Mobile- Ian 021-427.347  
 Mobile- Stephen 027-3355889  
 Email- [ian@irgroup.co.nz](mailto:ian@irgroup.co.nz)  
[steve@irgroup.co.nz](mailto:steve@irgroup.co.nz)  
 Web- [www.irgroup.co.nz](http://www.irgroup.co.nz)

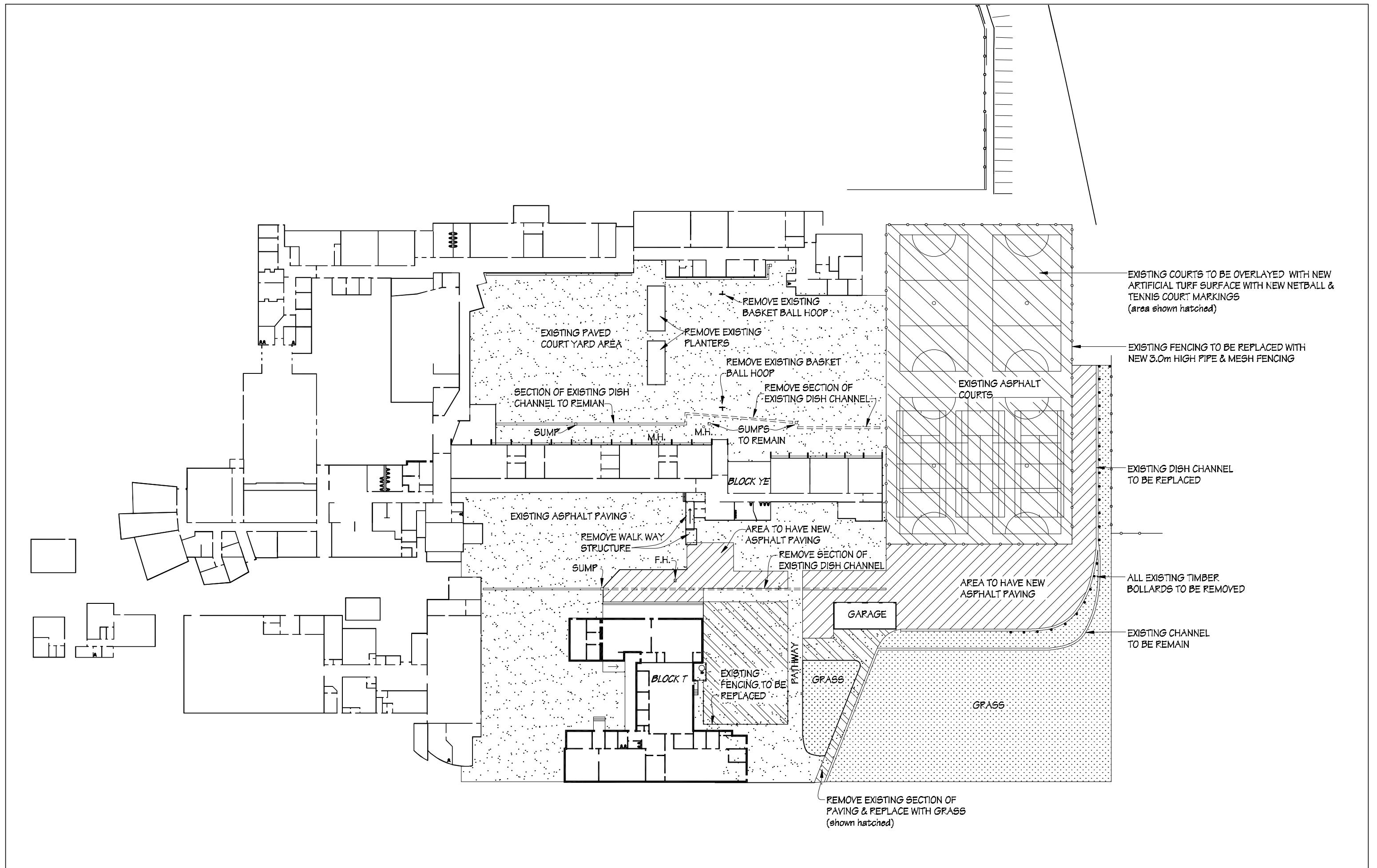
Issue Date  
11-10-2016


Pricing/Building  
Consent  
Drawings

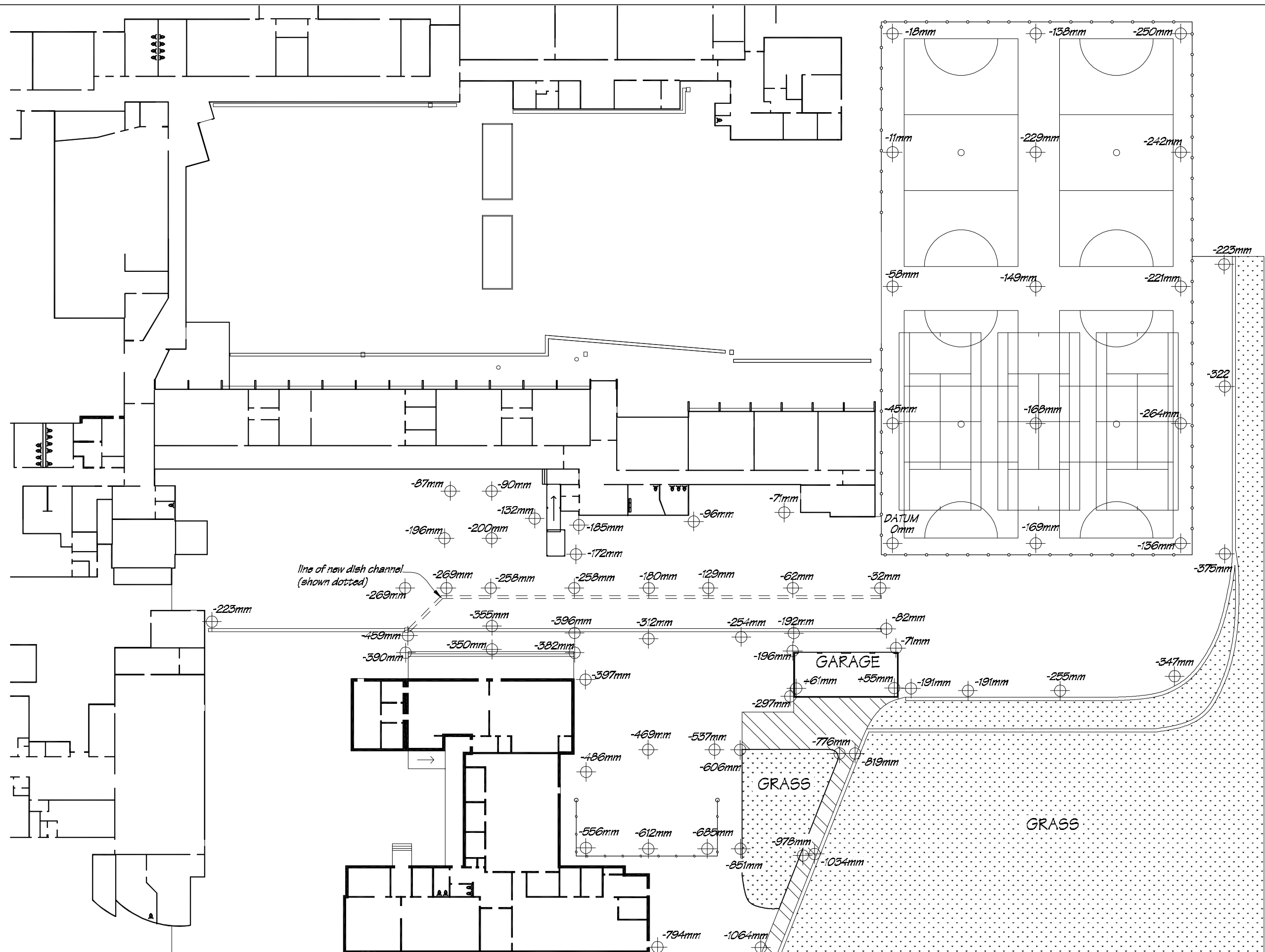



LEGAL INFORMATION	
Lots 1 & 2, DP 18397	
Part Lot 1, DP 19671	
ADDRESS	
Naenae College	
910 High Street	
Lower Hutt	
SITE INFORMATION	
Exposure Zone C.	
Earthquake Zone 3.	
Wind Zone - Very High	

 <b>IR Group Ltd</b> <small>Design - Project Management - Planning</small>	Phone- Office 04 526-7711	Naenae College 910 High Street Lower Hutt	PROJECT  Courts Upgrade	DRAWING TITLE  Site Plan	REVISIONS	Scale 1:500	Pricing/Building Consent Drawings
	Mobile- Ian 021-427-347				<i>No Date Description</i>	Date 11/01/16	
	Mobile- Stephen 027-3355889					Original sheet size A5	
	Email- <a href="mailto:ian@irgroup.co.nz">ian@irgroup.co.nz</a>					Drawn S.T.	
	<a href="mailto:steve@irgroup.co.nz">steve@irgroup.co.nz</a>					Sheet No 1 of 13	
	<a href="http://www.irgroup.co.nz">www.irgroup.co.nz</a>					Dwg Ref 1	
	Web-						

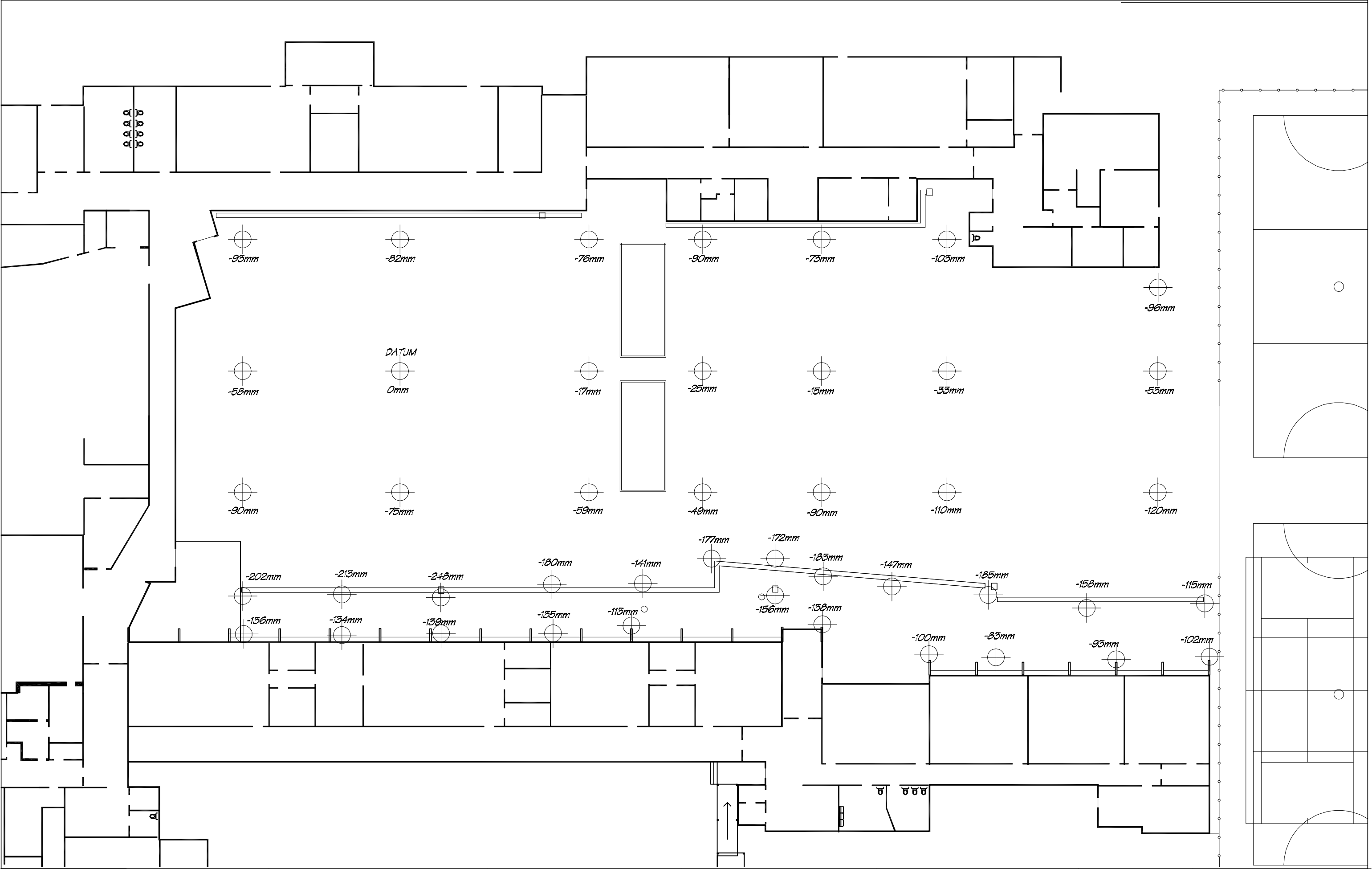



 IR Group Ltd <small>Design - Project Management - Planning</small>	Phone- Office 04 526-7711	Naenae College 910 High Street Lower Hutt	PROJECT:  Courts Upgrade	DRAWING TITLE  Overall Existing Courts & Paving Plan	REVISIONS <table><tr><th>No</th><th>Date</th><th>Description</th></tr></table>	No	Date	Description	Scale	1:750	Pricing/Building Consent Drawings
	No					Date	Description				
	Mobile- Ian 021-427.347					Date	11/01/16				
	Mobile- Stephen 027-3355889					Original sheet size	A3	Do not scale from drawings. Check all dimensions on site.			
	Email- ian@irgroup.co.nz					Drawn	S. T.				
	steve@irgroup.co.nz					Sheet No	2 of 13				
www.irgroup.co.nz	Dwg Ref	2									
Web-											

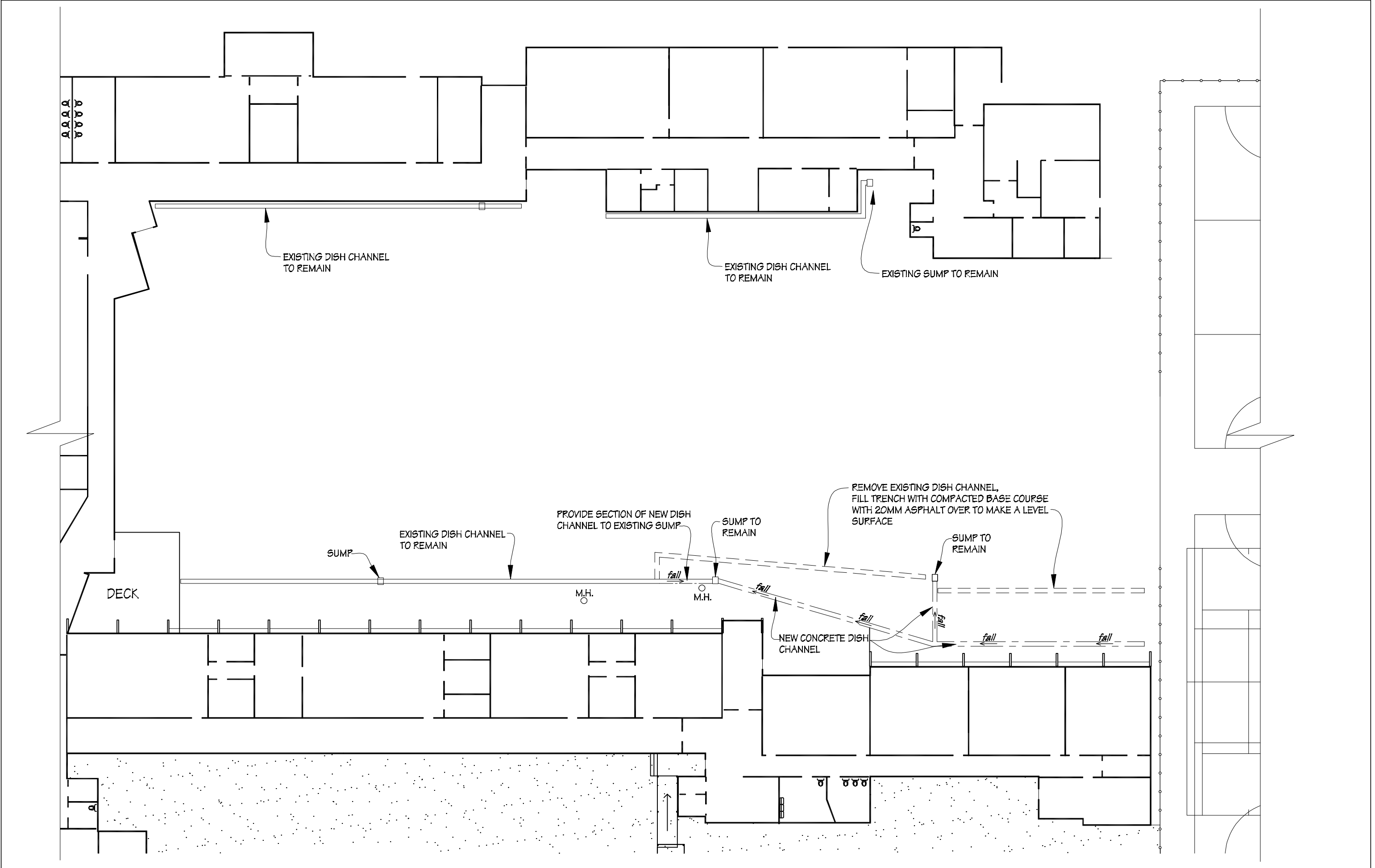



 <p>IR Group Ltd</p>	<p>Phone- Office 04 526-7711          Mobile- Ian 021-427.347          Mobile- Stephen 027-3355889          Email- <a href="mailto:ian@irgroup.co.nz">ian@irgroup.co.nz</a>  <a href="mailto:steve@irgroup.co.nz">steve@irgroup.co.nz</a>          Web- <a href="http://www.irgroup.co.nz">www.irgroup.co.nz</a></p>	<p><b>Naenae College</b>  <b>910 High Street</b>  <b>Lower Hutt</b></p>	<p>PROJECT  <b>Courts Upgrade</b></p>	<p>DRAWING TITLE  <b>General Area</b>  <b>Existing Site Spot Levels</b></p>	<p>REVISIONS          No Date Description</p>	<p>Scale 1:500          Date 11/01/16          Original sheet size A3          Drawn S.T.          Sheet No 3 of 13          Dwg Ref 3</p>	<p>Pricing/Building Consent Drawings          Do not scale from drawings.          Check all dimensions on site.</p>
---------------------------------------------------------------------------------------------------------	------------------------------------------------------------------------------------------------------------------------------------------------------------------------------------------------------------------------------------------------------------------------------------------------------------------------------------------	---------------------------------------------------------------------------------	-------------------------------------------	-------------------------------------------------------------------------------------	---------------------------------------------------	----------------------------------------------------------------------------------------------------------------------------------------------------------------	------------------------------------------------------------------------------------------------------------------------------

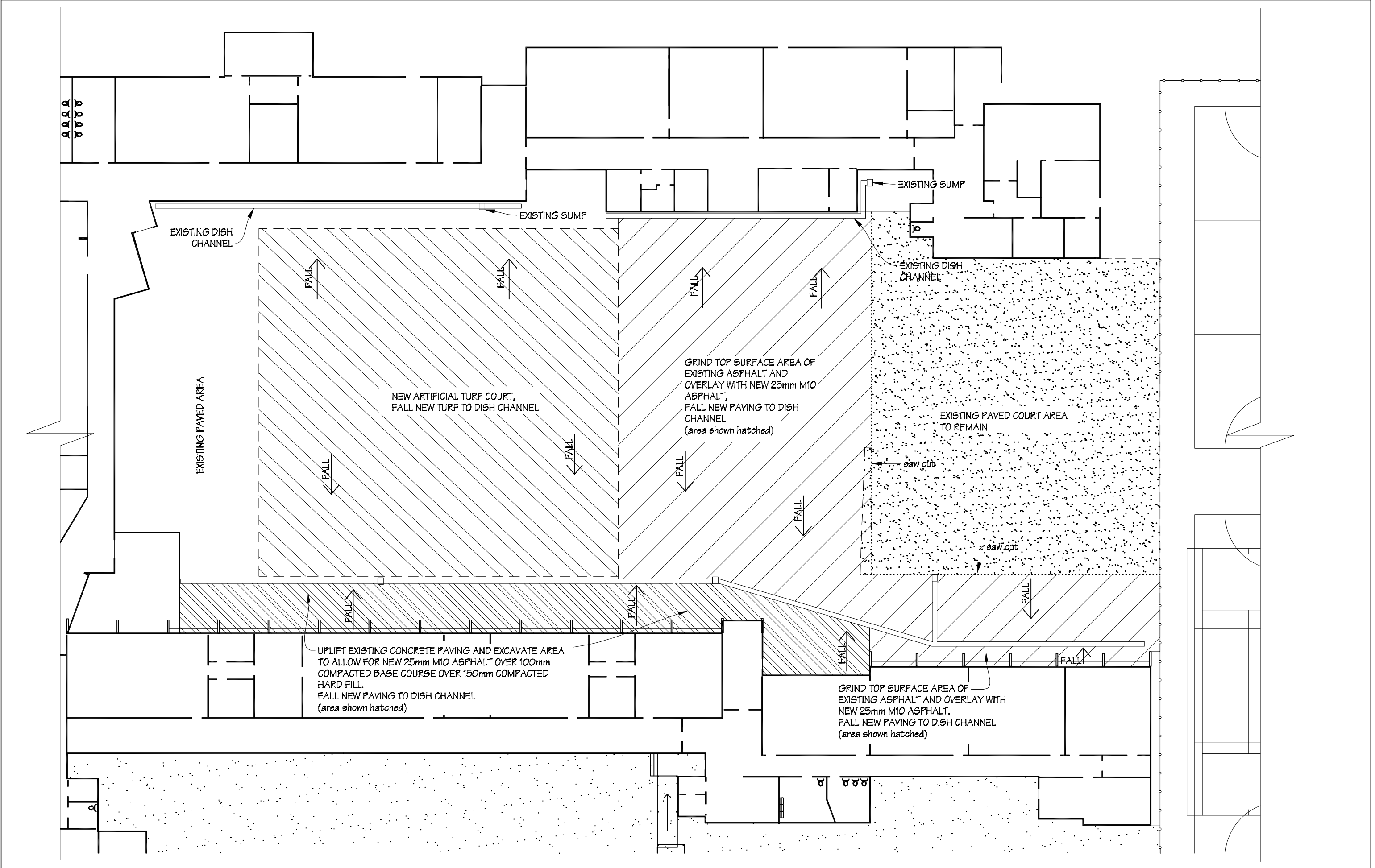





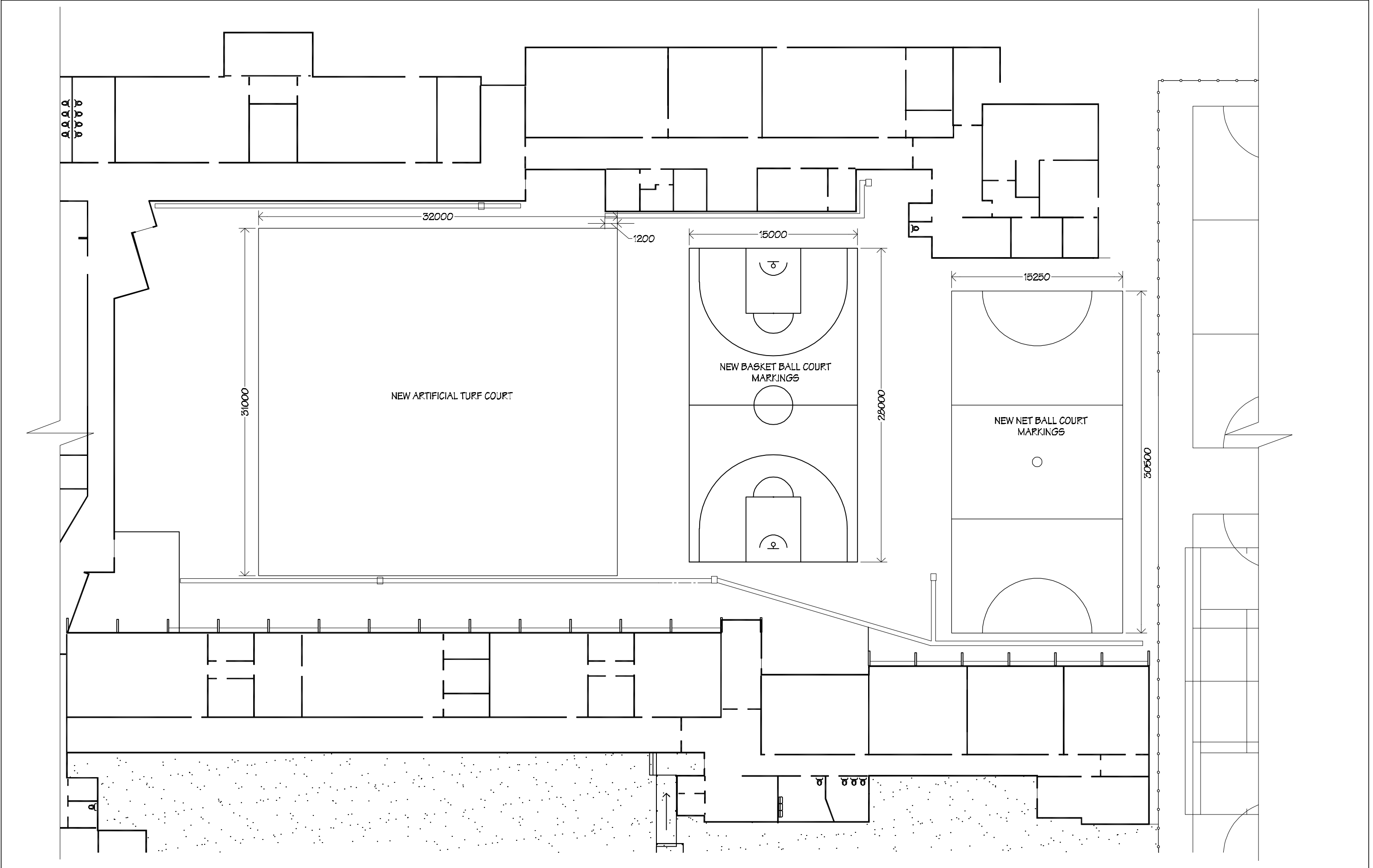
 IR Group Ltd <small>Design - Project Management - Planning</small>	Phone- Office 04 526-7711	Naenae College 910 High Street Lower Hutt	PROJECT	DRAWING TITLE	REVISIONS	Scale	1:250	Pricing/Building Consent Drawings
	Mobile- Ian 021-427.347					Date	11/10/16	
	Mobile- Stephen 027-3355889					Original sheet size	A3	
	Email- <a href="mailto:ian@irgroup.co.nz">ian@irgroup.co.nz</a>					Drawn	S.T.	
	<a href="mailto:steve@irgroup.co.nz">steve@irgroup.co.nz</a>					Sheet No	4 of 13	
	Web- <a href="http://www.irgroup.co.nz">www.irgroup.co.nz</a>					Dwg Ref	4	
								<i>Do not scale from drawings. Check all dimensions on site.</i>




 IR Group Ltd <small>Design - Project Management - Planning</small>	Phone- Office 04 526-7711	Naenae College 910 High Street Lower Hutt	PROJECT  Courts Upgrade	DRAWING TITLE  Court Yard Dish Channel Plan	REVISIONS	Scale	1:500	Pricing/Building Consent Drawings		
	Mobile- Ian 021-427.347				No	Date	Description		Date	11/10/16
	Mobile- Stephen 027-3355889								Original sheet size	A3
	Email- <a href="mailto:ian@irgroup.co.nz">ian@irgroup.co.nz</a>								Drawn	S.T.
	<a href="mailto:steve@irgroup.co.nz">steve@irgroup.co.nz</a>								Sheet No	5 of 13
	Web- <a href="http://www.irgroup.co.nz">www.irgroup.co.nz</a>								Dwg Ref	5

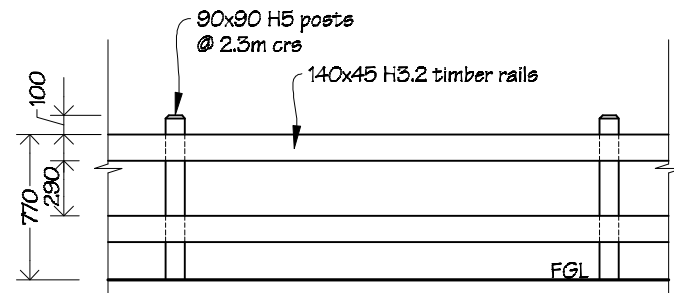


 IR Group Ltd <small>Design - Project Management - Planning</small>	Phone- Office 04 526-7711	Naenae College 910 High Street Lower Hutt	PROJECT	DRAWING TITLE	REVISIONS	Scale	1:500	Pricing/Building Consent Drawings	
	Mobile- Ian 021-427.347					Date	11/07/16		
	Mobile- Stephen 027-3355889					Original sheet size	A3		
	Email- <a href="mailto:ian@irgroup.co.nz">ian@irgroup.co.nz</a>					Drawn	S.T.		Do not scale from drawings. Check all dimensions on site.
	Web- <a href="http://www.irgroup.co.nz">www.irgroup.co.nz</a>					Sheet No	6 of 13		
						Dwg Ref	6		



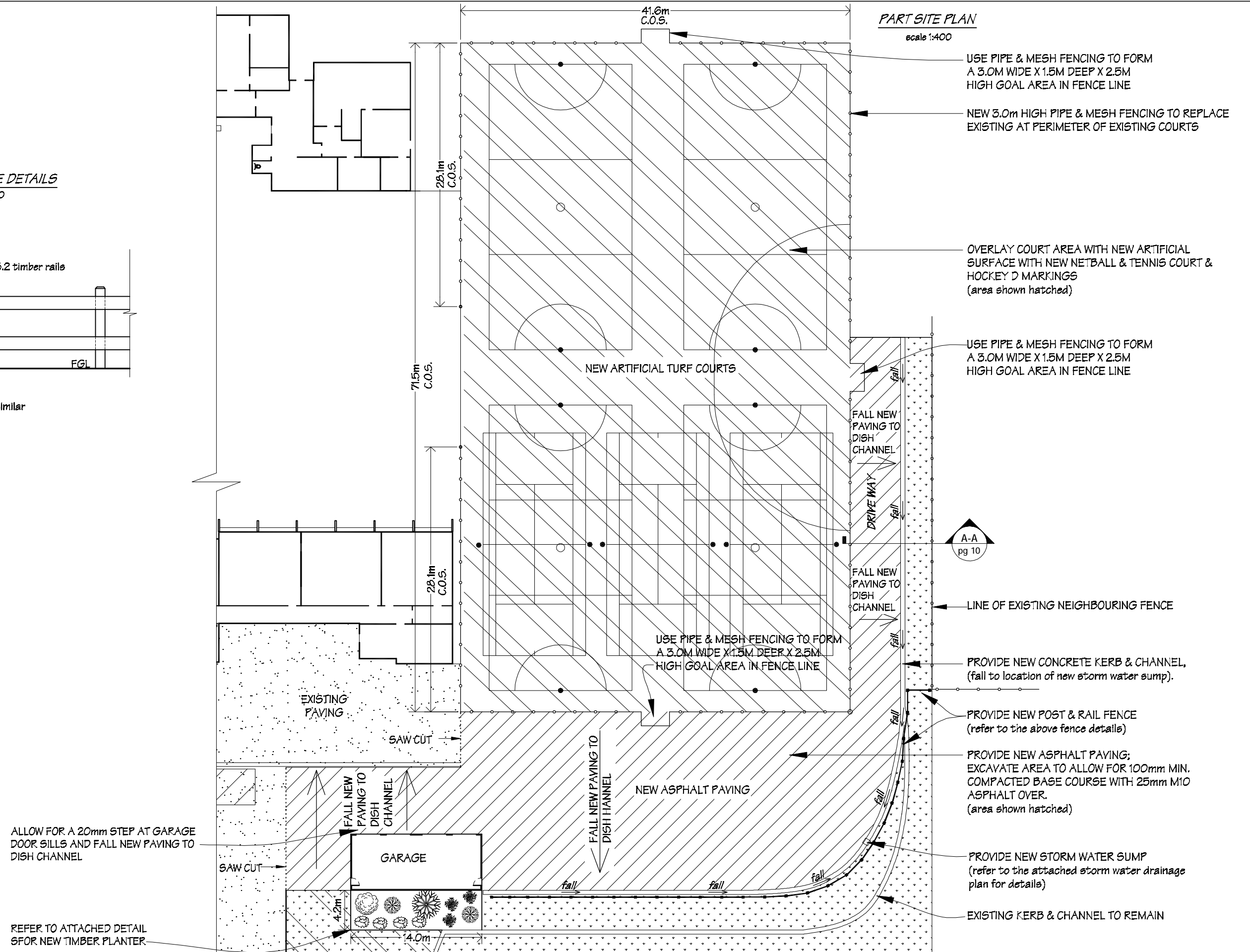
 IR Group Ltd <small>Design - Project Management - Planning</small>	Phone- Office 04 526-7711	Naenae College 910 High Street Lower Hutt	PROJECT  Courts Upgrade	DRAWING TITLE  Court Yard New Court Markings Plan	REVISIONS	Scale 1:300	Pricing/Building Consent Drawings	
	Mobile- Ian 021-427.347				<u>No</u> <u>Date</u> <u>Description</u>	Date 11/07/16		
	Mobile- Stephen 027-3355889					Original sheet size A3		
	Email- ian@irgroup.co.nz					Drawn S.T.		Do not scale from drawings. Check all dimensions on site.
	steve@irgroup.co.nz					Sheet No 7 of 13		
	Web- www.irgroup.co.nz					Dwg Ref 7		

# **TIMBER FENCE DETAILS** scale 1:40



**NOTE:**  
New timber fencing detail to be similar existing, check details on site.  
Timber grade to be SGB.

# **PART SITE PLAN** scale 1:400



Phone- Office 04 526-7711  
Mobile- Ian 021-427.347  
Mobile- Stephen 027-3355889  
Email- [ian@irgroup.co.nz](mailto:ian@irgroup.co.nz)  
[steve@irgroup.co.nz](mailto:steve@irgroup.co.nz)  
Web- [www.irgroup.co.nz](http://www.irgroup.co.nz)

**Naenae College**  
910 High Street  
Lower Hutt

PROJECT

**Courts Upgrade**

DRAWING TITLE

**Main Courts;  
New Artificial Net Ball Courts,  
Paving, Fencing & Kerbing Plan**

REVISIONS

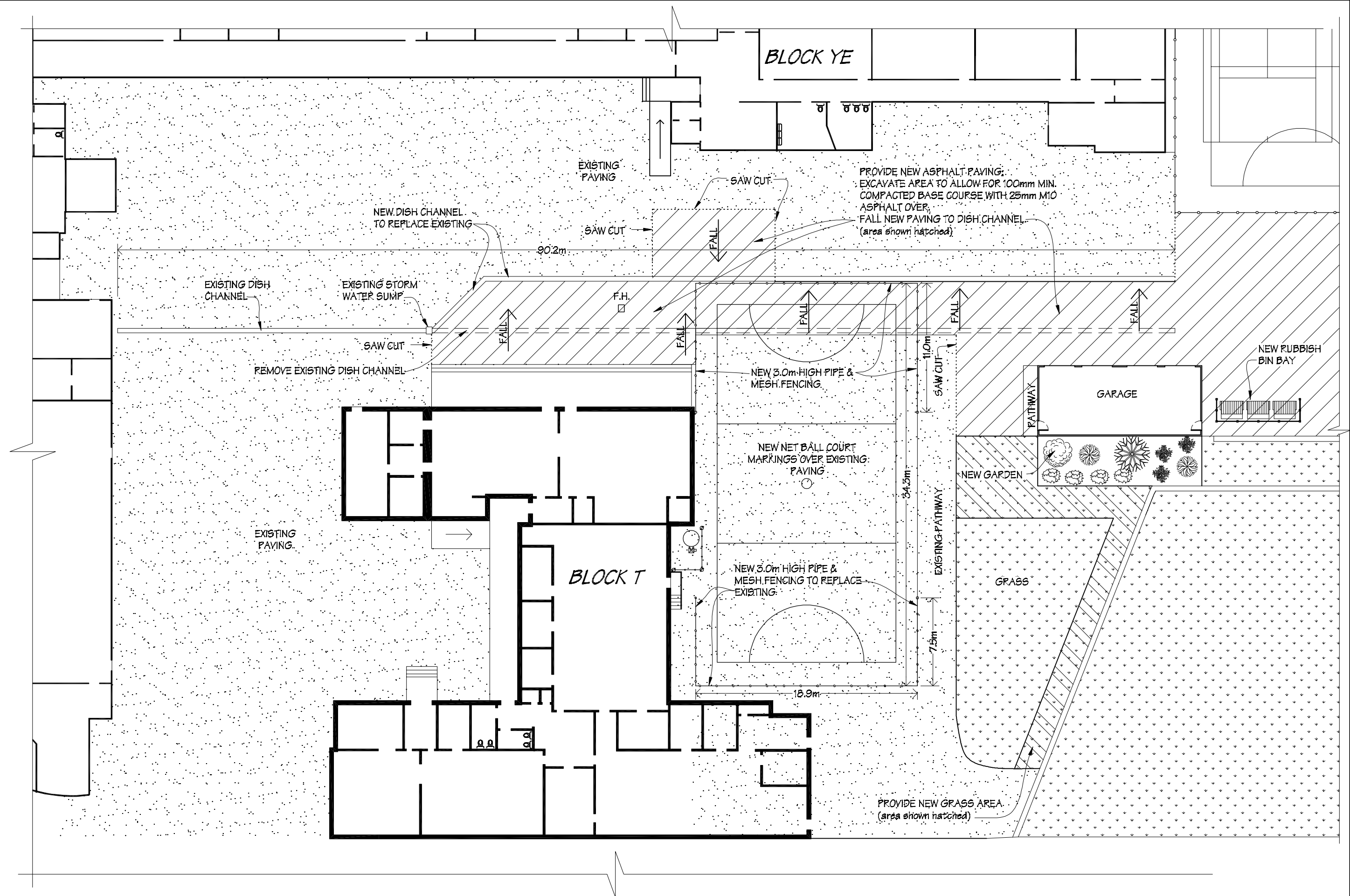
No Date Description


Scale	as shown
Date	11/07/16
Original sheet size	A3
Drawn	S.T.
Sheet No	8 of 13
Dwg Ref	8

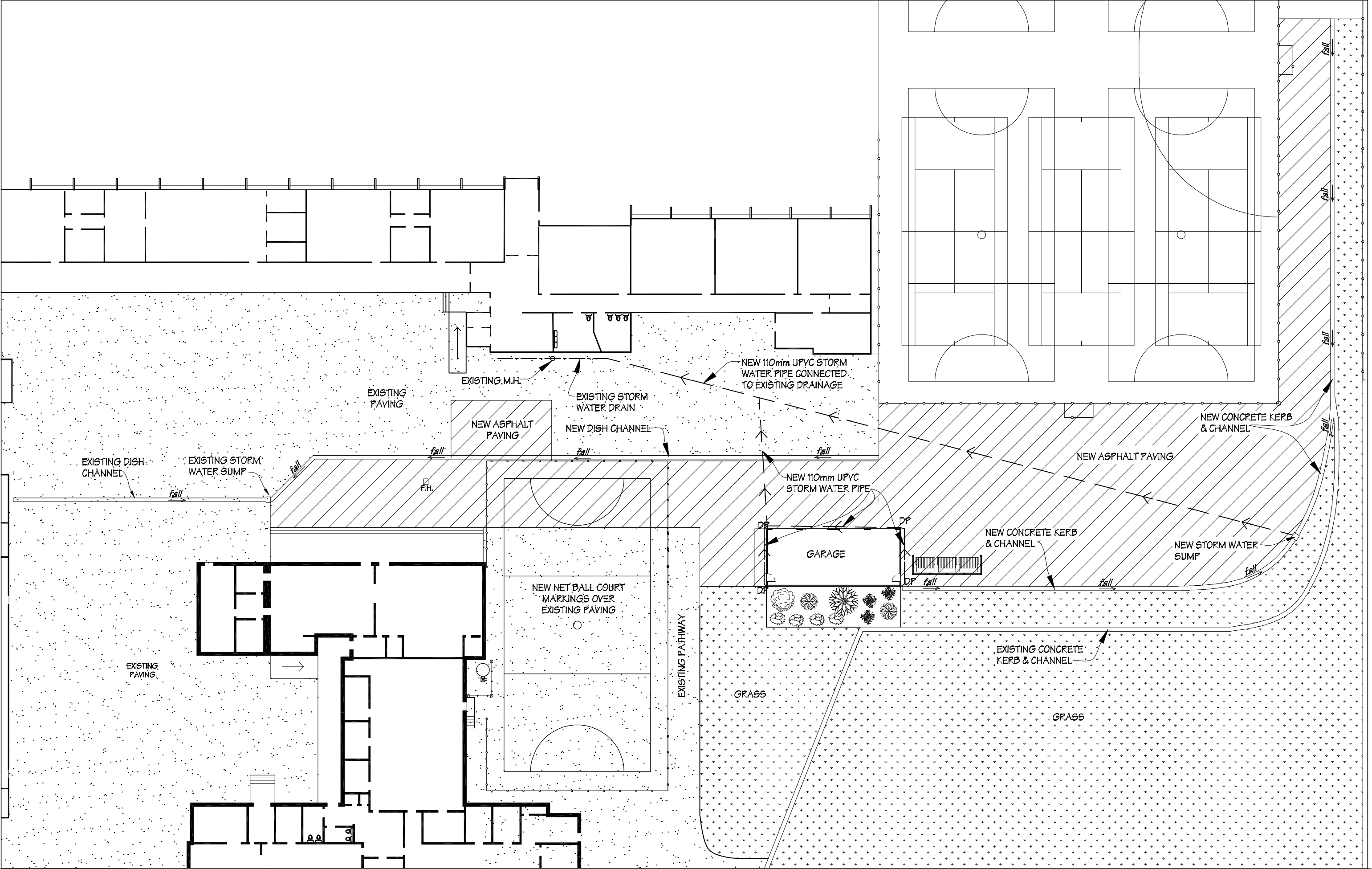
**Pricing/Building Consent  
Drawings**


*Do not scale from drawings.  
Check all dimensions on site.*

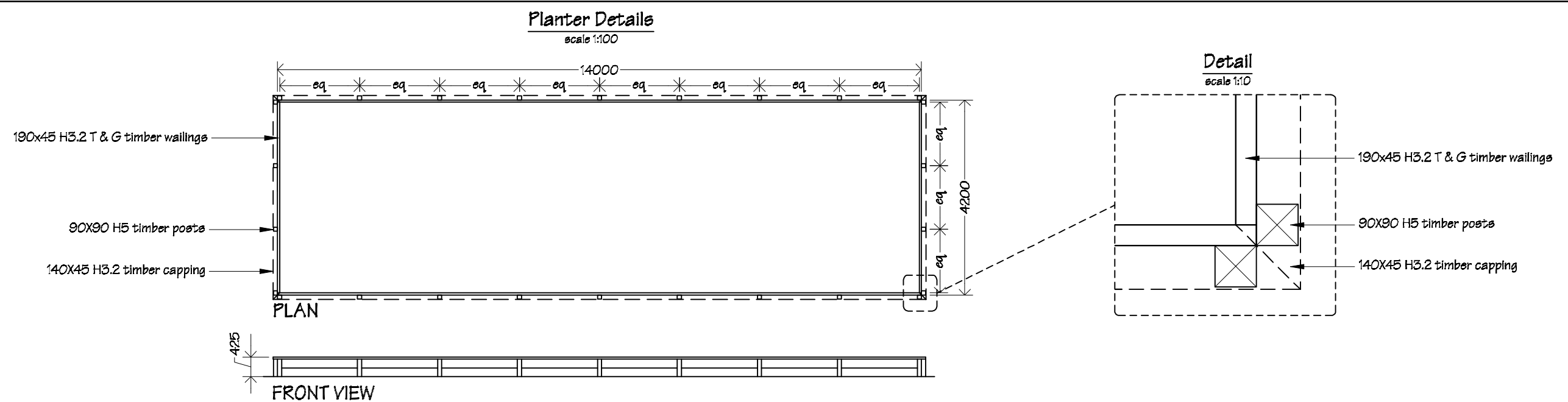
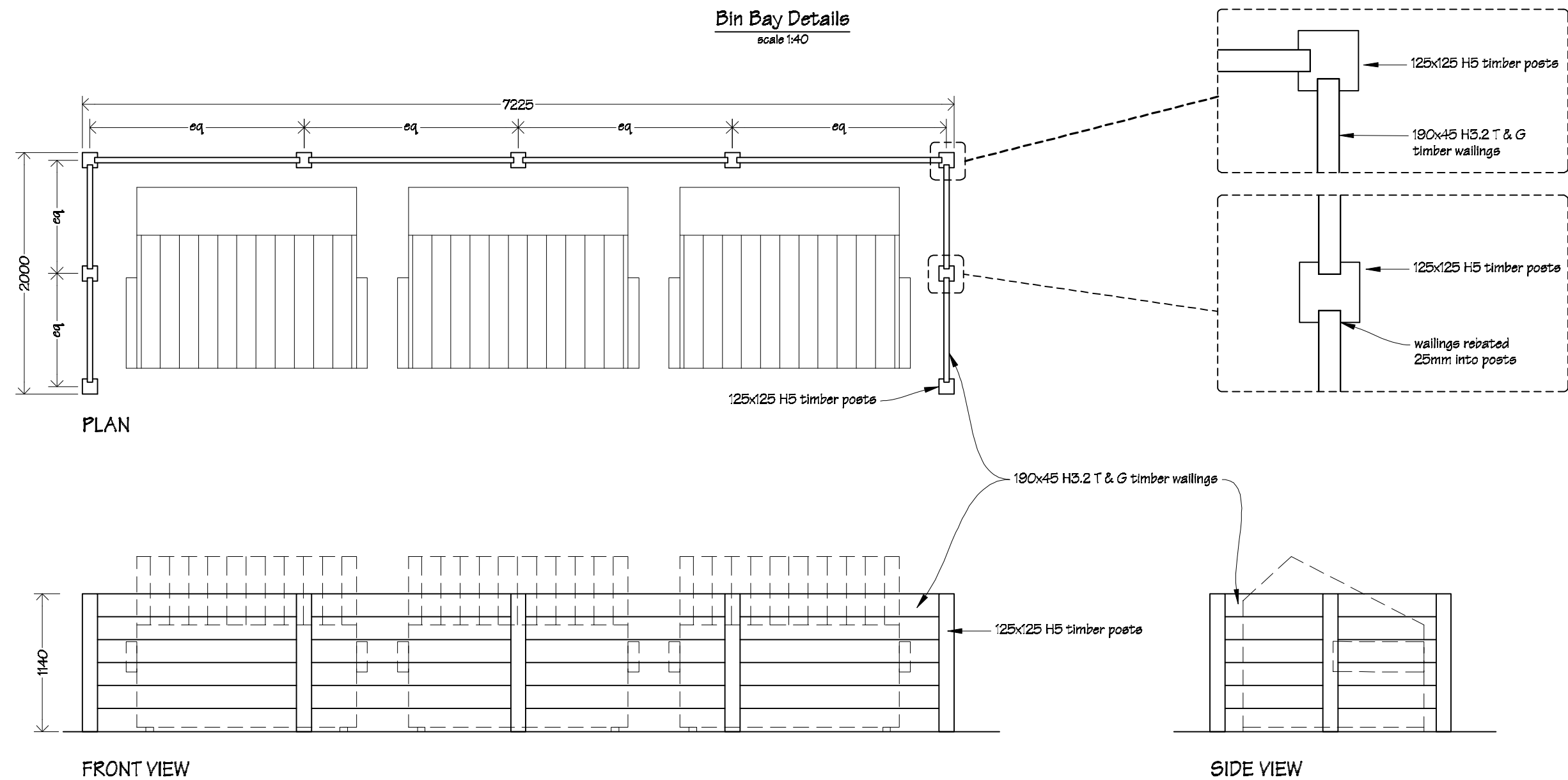





 <b>IR Group Ltd</b> <small>Design - Project Management - Planning</small>	Phone- Office 04 526-7711	<b>Naenae College</b> <b>910 High Street</b> <b>Lower Hutt</b>	<b>PROJECT</b>  <b>Courts Upgrade</b>	<b>DRAWING TITLE</b>  <b>General Area</b> <b>New Fencing, Dish Channel &amp;</b> <b>Landscaping Plan</b>	<b>REVISIONS</b>	<b>Scale</b> 1:500	<b>Pricing/Building Consent Drawings</b>
	Mobile- Ian 021-427.347				<i>No Date Description</i>	<b>Date</b> 11/01/16	
	Mobile- Stephen 027-3355889					<b>Original sheet size</b> A3	
	Email- ian@irgroup.co.nz					<b>Drawn</b> S. T.	
	Web- steve@irgroup.co.nz					<b>Sheet No</b> 9 of 13	
	www.irgroup.co.nz					<b>Dwg Ref</b> 9	

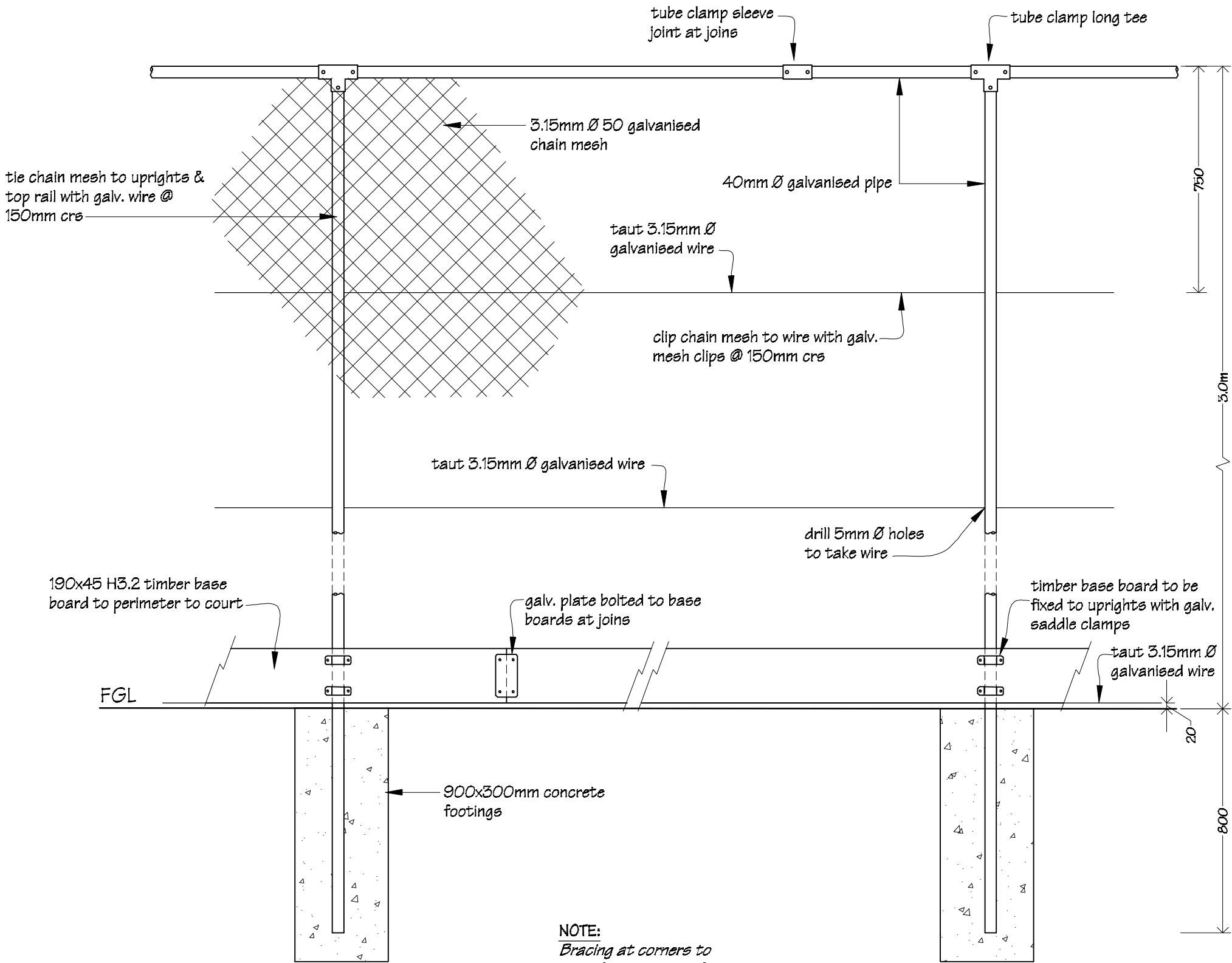


 IR Group Ltd <small>Design - Project Management - Planning</small>	Phone- Office 04 526-7711	Naenae College 910 High Street Lower Hutt	PROJECT	DRAWING TITLE	General Area Proposed Storm Water Drainage Plan	REVISIONS	Scale 1:550	Pricing/Building Consent Drawings
	Mobile- Ian 021-427.347					No Date Description	Date 11/10/16	
	Mobile- Stephen 027-3355889						Original sheet size A3	
	Email- ian@irgroup.co.nz						Drawn S.T.	
	Web- steve@irgroup.co.nz						Sheet No 10 of 13	
	www.irgroup.co.nz					Dwg Ref 10	Do not scale from drawings. Check all dimensions on site.	




 <b>IR Group Ltd</b> <small>Design - Project Management - Planning</small>	Phone- Office 04 526-7711	Naenae College 910 High Street Lower Hutt	PROJECT  Courts Upgrade	DRAWING TITLE  Bin Bay Details	REVISIONS <table><tr><th>No</th><th>Date</th><th>Description</th></tr><tr><td> </td><td> </td><td> </td></tr></table>	No	Date	Description				Scale 1:40	Pricing/Building Consent Drawings  <i>Do not scale from drawings. Check all dimensions on site.</i>
	No					Date	Description						
	Mobile- Ian 021-427.347					Date 11/10/16							
	Mobile- Stephen 027-3355889					Original sheet size A3							
	Email- ian@irgroup.co.nz					Drawn S. T.							
	steve@irgroup.co.nz					Sheet No 11 of 13							
www.irgroup.co.nz	Dwg Ref 11												
Web-													

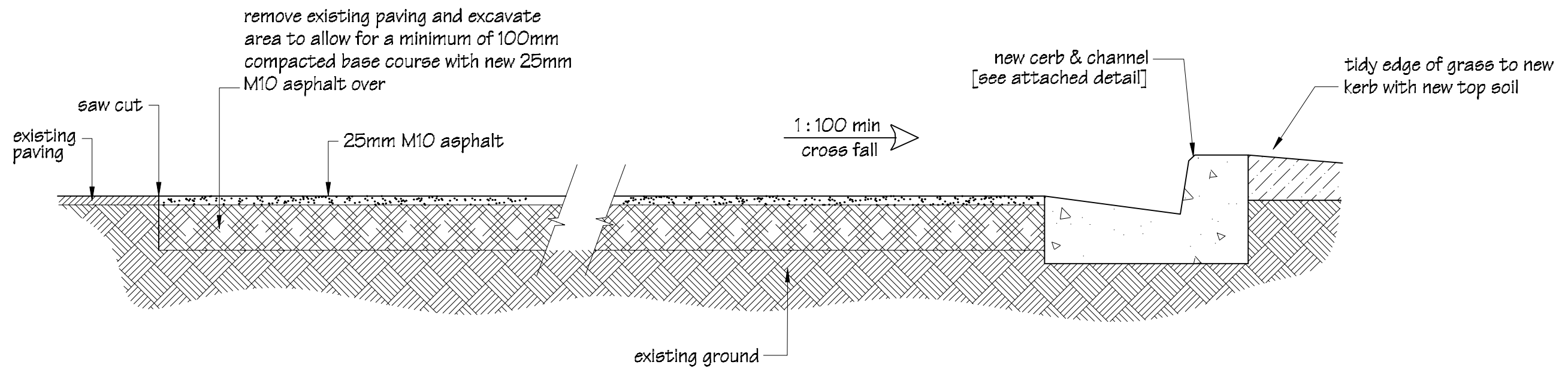
STANDARD 3.0m HIGH PIPE RAIL & CHAIN MESH FENCE DETAILS



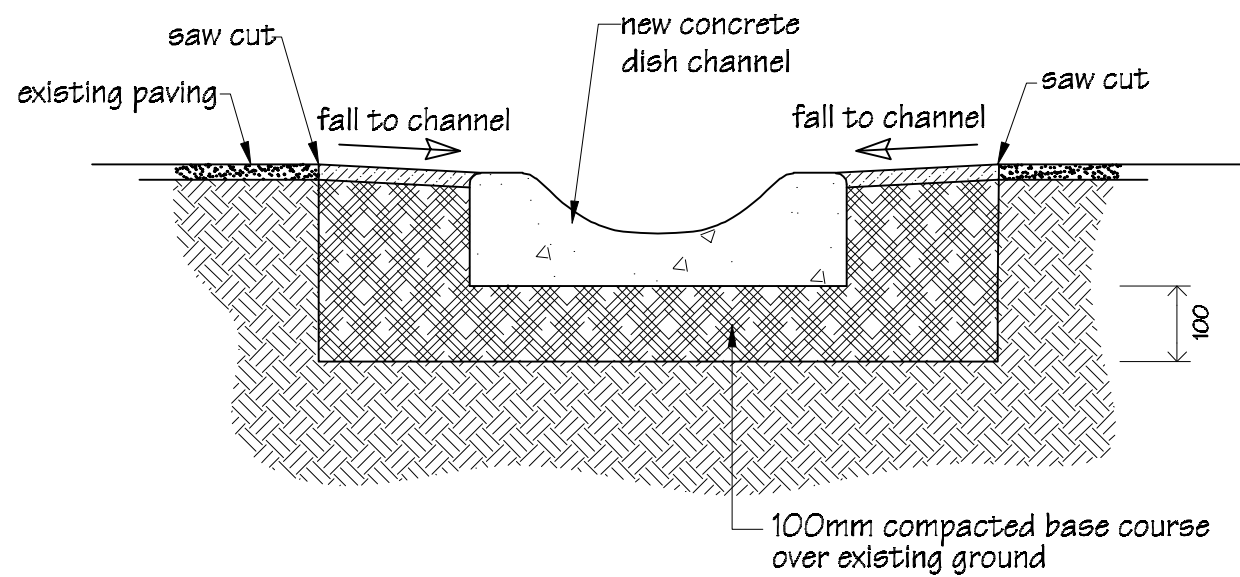
NOTE:  
Bracing at corners to  
manufactures specifications.  
Braces to be set in concrete.

 IR Group Ltd Design - Project Management - Planning	Phone- Office 04 526-7711 Mobile- Ian 021-427.347 Mobile- Stephen 027-3355889 Email- ian@irgroup.co.nz steve@irgroup.co.nz Web- www.irgroup.co.nz	PROJECT  Naenae College 910 High Street Lower Hutt	DRAWING TITLE  Courts Upgrade	3.0m Pipe & Chain Mesh Fence Details	REVISIONS No Date Description	Scale	1:16	Pricing/Building Consent Drawings  Do not scale from drawings. Check all dimensions on site.
						Date	11/01/16	
						Original sheet size	A3	
						Drawn	S. T.	
						Sheet No	12 of 13	
						Dwg Ref	12	

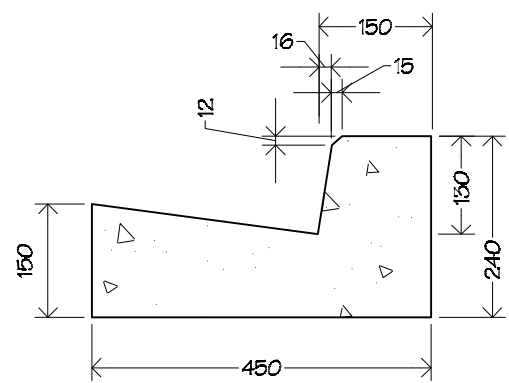
TYPICAL CROSS SECTION A-A




TYPICAL DISH CHANNEL CROSS SECTION



TYPICAL CONCRETE KERB DETAILS



 IR Group Ltd Design - Project Management - Planning	Phone- Office 04 526-7711 Mobile- Ian 021-427.347 Mobile- Stephen 027-3355889 Email- ian@irgroup.co.nz steve@irgroup.co.nz Web- www.irgroup.co.nz	PROJECT  Courts Upgrade	DRAWING TITLE  Paving, Dish Channel and Kerb & Channel Details	REVISIONS No Date Description	Scale	1:10	Pricing/Building Consent Drawings  Do not scale from drawings. Check all dimensions on site.
					Date	11/01/16	
					Original sheet size	A3	
					Drawn	S.T.	
					Sheet No	13 of 13	
					Dwg Ref	13	