

NAENAE INTERMEDIATE SCHOOL G.S.E. MODIFICATIONS

Walters Street
Naenae
Lower Hutt

for
Naenae Intermediate School Board of Trustees

DRAWINGS

<u>Page No</u>	<u>Description</u>	<u>Scale</u>
Page 1	Site Plan	1:500
Page 2	Block D Accessible Ramp & Toilet Details	as shown
Page 3	Block D Accessible Ramp Details	as shown
Page 4	Block D Accessible Ramp Elevations	1:40
Page 5	Technical Block Accessible Ramp & New Doors	as shown
Page 6	Technical Block Accessible Ramp Cross Sections	1:10
Page 7	Blocks A & B Door Ways & Barriers	1:50

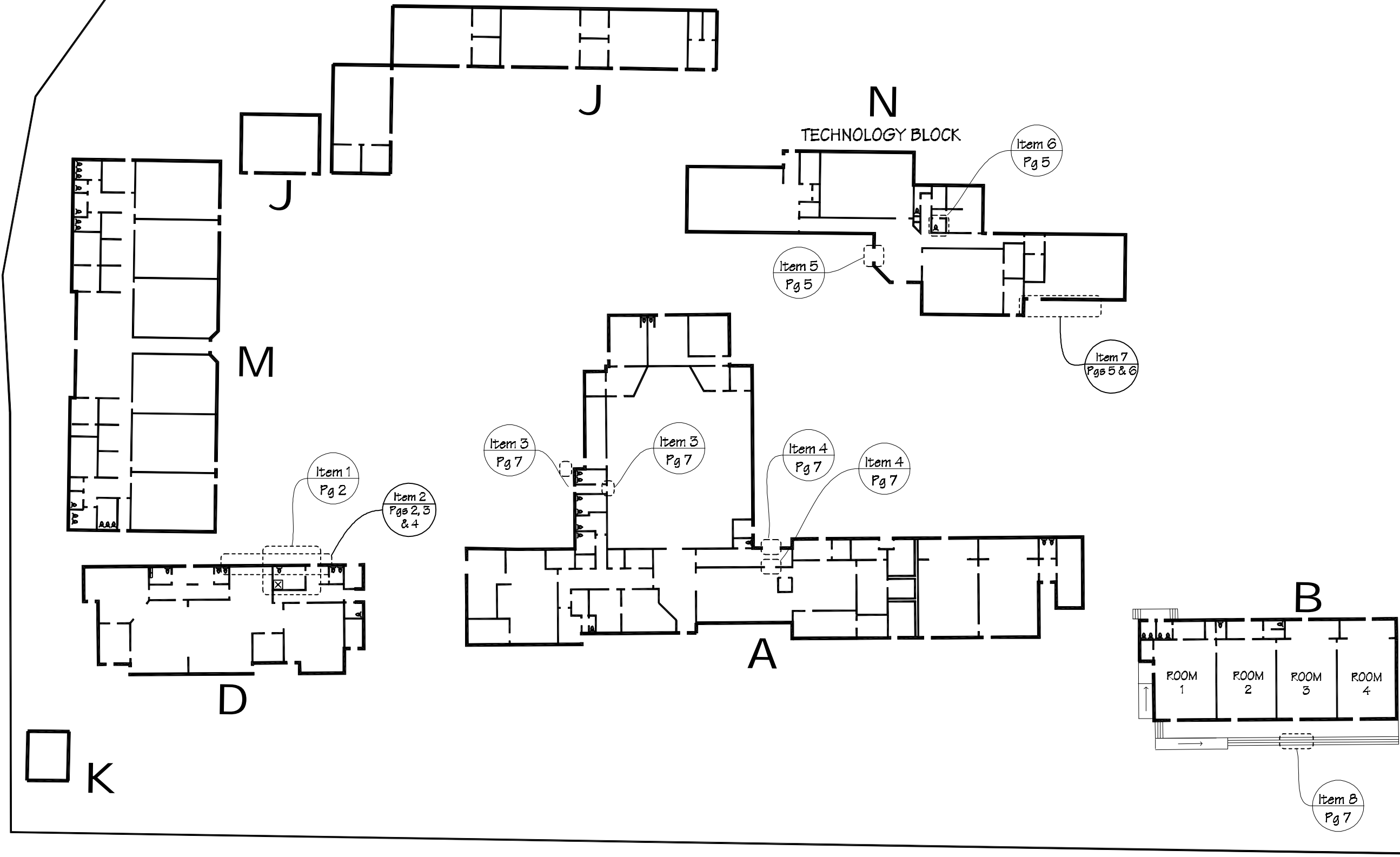
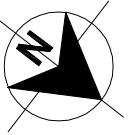


IR Group Ltd


Design - Project Management - Planning

Phone- Office 04 526-7711
Mobile- Ian 021-427.347
Mobile- Stephen 027-3355889
Email- ian@irgroup.co.nz
steve@irgroup.co.nz
Web- www.irgroup.co.nz

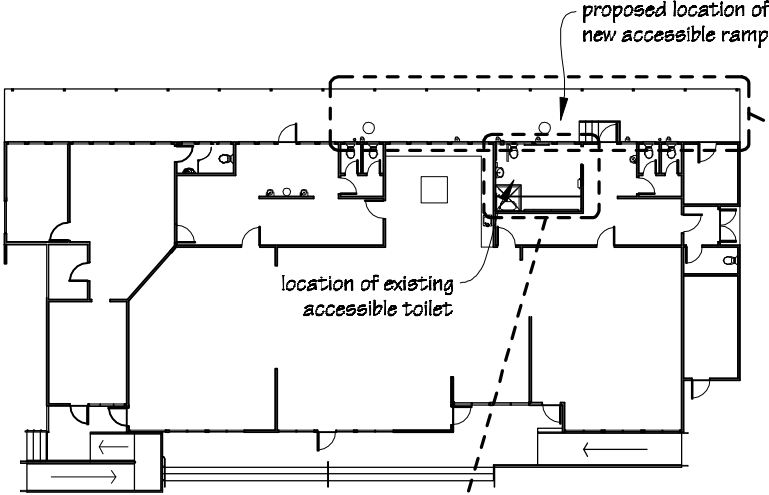
Pricing/Building
Consent
Drawings



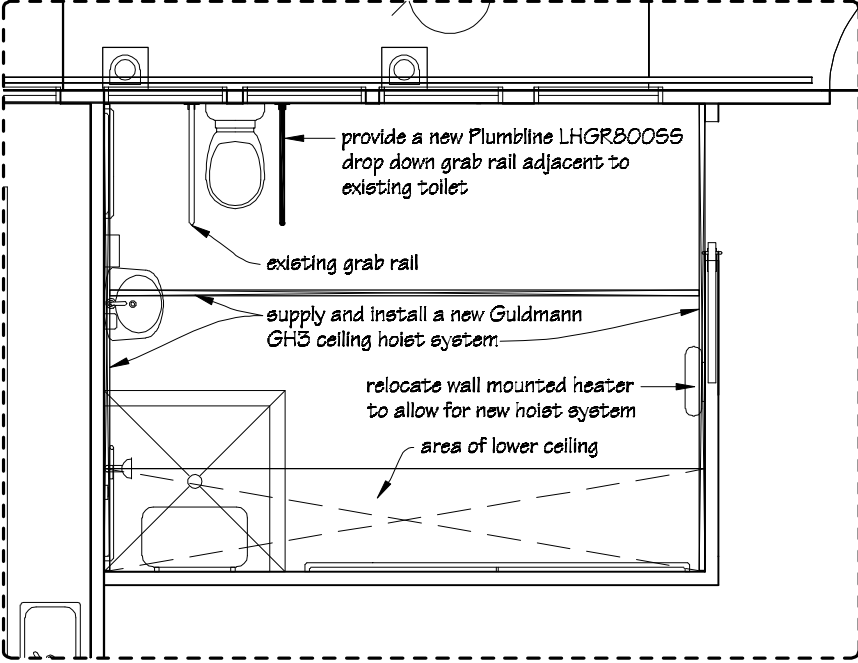
WALTERS STREET

 IR Group Ltd <small>Design - Project Management - Planning</small>	Phone- Office 04 526-7711	Naenae Intermediate School Walters Street Naenae Lower Hutt	PROJECT	DRAWING TITLE	REVISIONS	Scale 1:500	Pricing/Building Consent Drawings	
	Mobile- Ian 021-427.347				<u>No</u> <u>Date</u> <u>Description</u>	Date 09/08/16		
	Mobile- Stephen 027-3355889					Original sheet size A3		
	Email- ian@irgroup.co.nz					Drawn S.T.		Do not scale from drawings. Check all dimensions on site.
	steve@irgroup.co.nz					Sheet No 1 of 7		
	www.irgroup.co.nz					Dwg Ref 1		
	Web-							

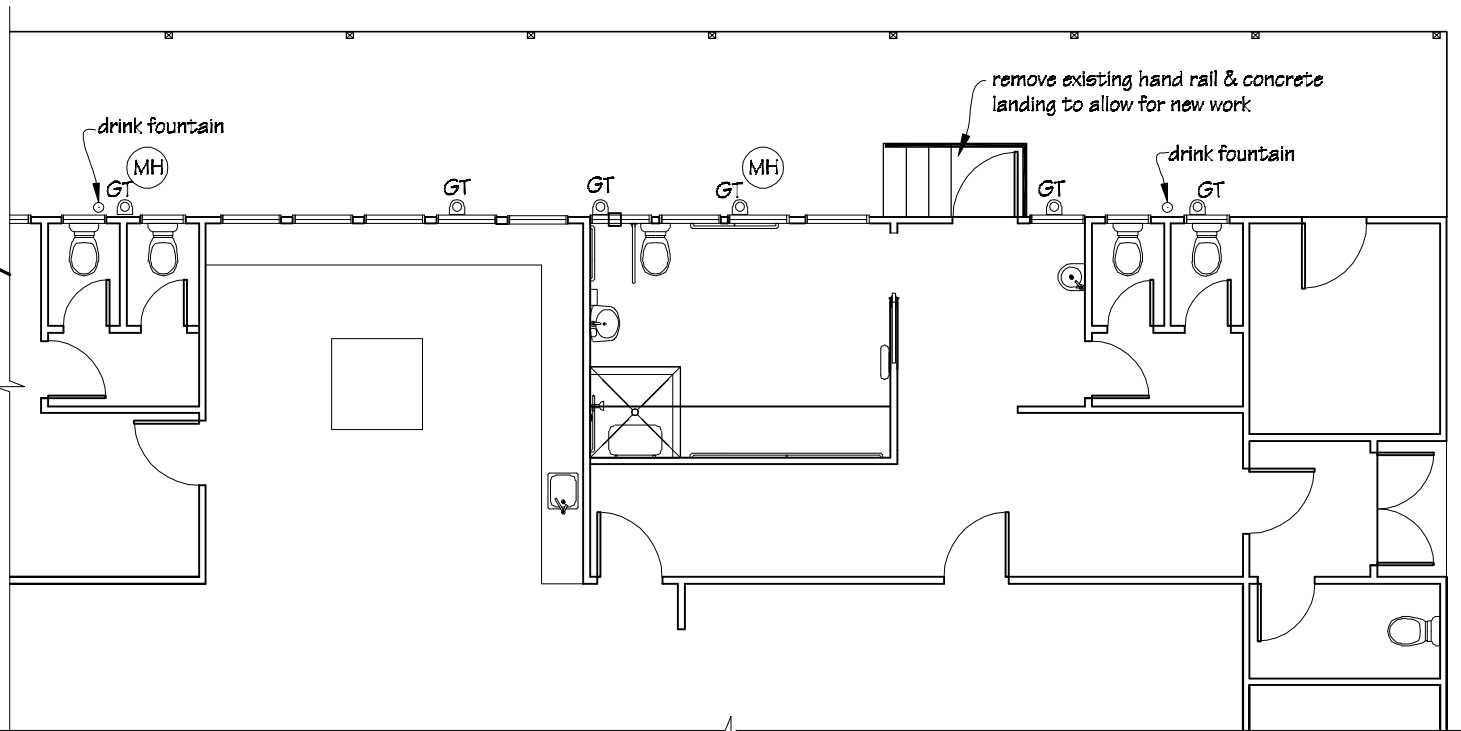
Block D Floor Plan
scale 1:350



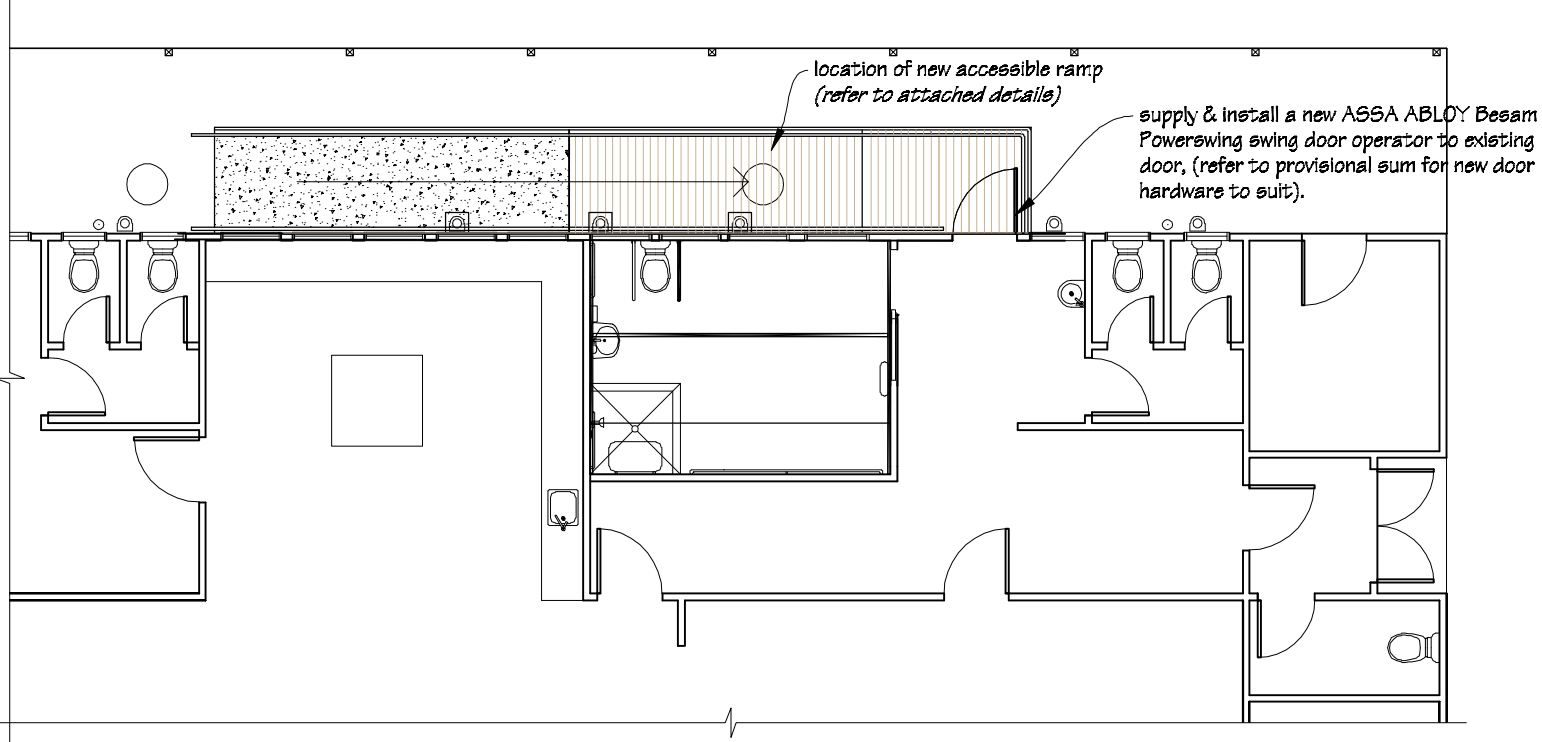
ITEM 1
Accessible Toilet
Floor Plan
scale 1:50




ITEM 2
Block D
Existing Part Floor Plan
scale 1:100



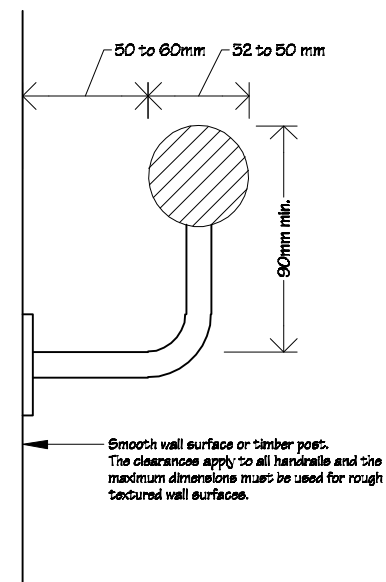
ITEM 2
Block D
Proposed Part Floor Plan
scale 1:100



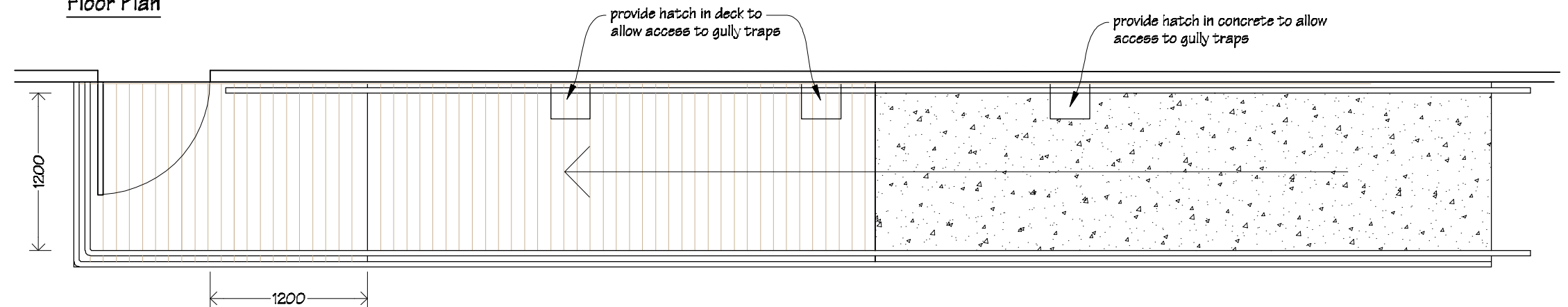
 IR Group Ltd Design - Project Management - Planning	Phone- Office 04 526-7711 Mobile- Ian 021-427.347 Mobile- Stephen 027-3355889 Email- ian@irgroup.co.nz steve@irgroup.co.nz Web- www.irgroup.co.nz	Naenae Intermediate School Walters Street Naenae Lower Hutt	PROJECT G.S.E. Modifications	DRAWING TITLE Block D Accessible Ramp & Toilet Details	REVISIONS <i>No Date Description</i>	Scale	as shown	Pricing/Building Consent Drawings <i>Do not scale from drawings. Check all dimensions on site.</i>
						Date	09/08/16	
						Original sheet size	A3	
						Drawn	S.T.	
						Sheet No	2 of 7	
						Dwg Ref	2	

ITEM 2
Block D
Accessible Ramp Details

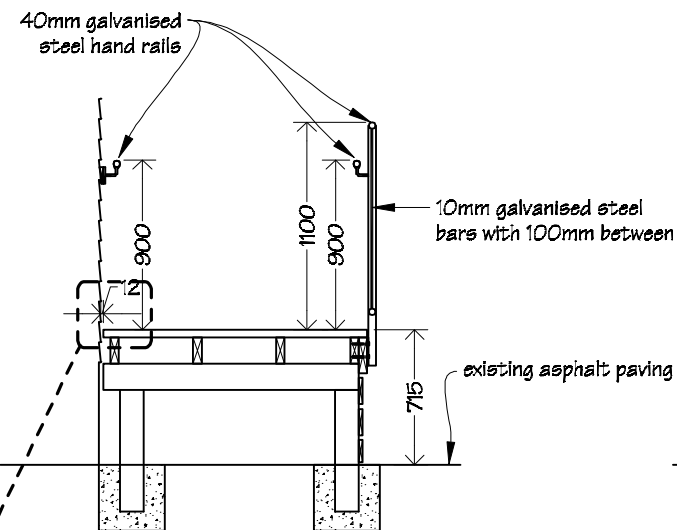
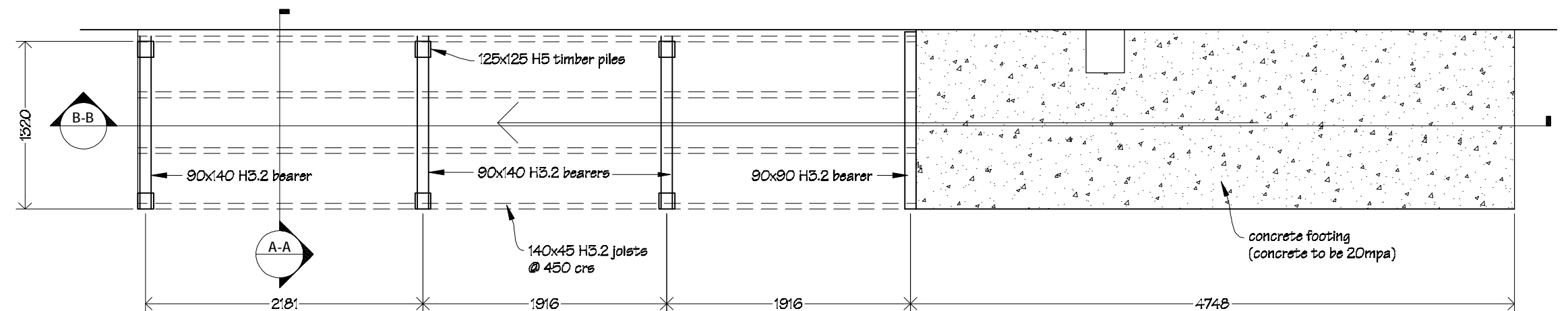
Typical Handrail Detail
Scale 1:5



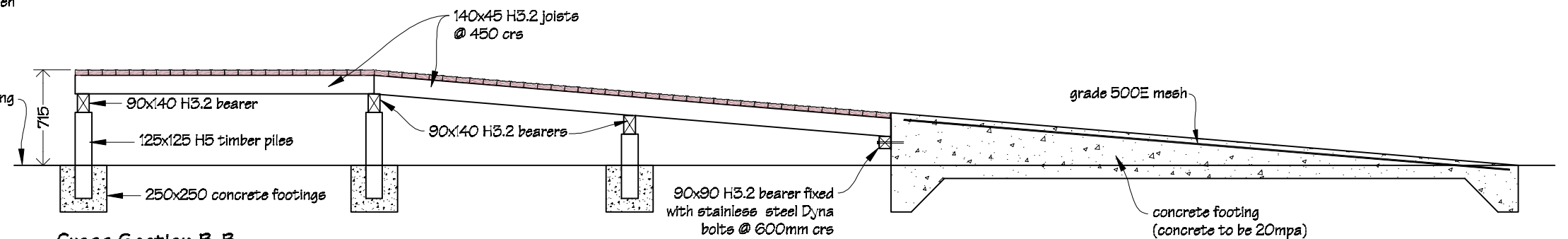
Floor Plan



Sub-floor Framing Plan




Cross Section A-A

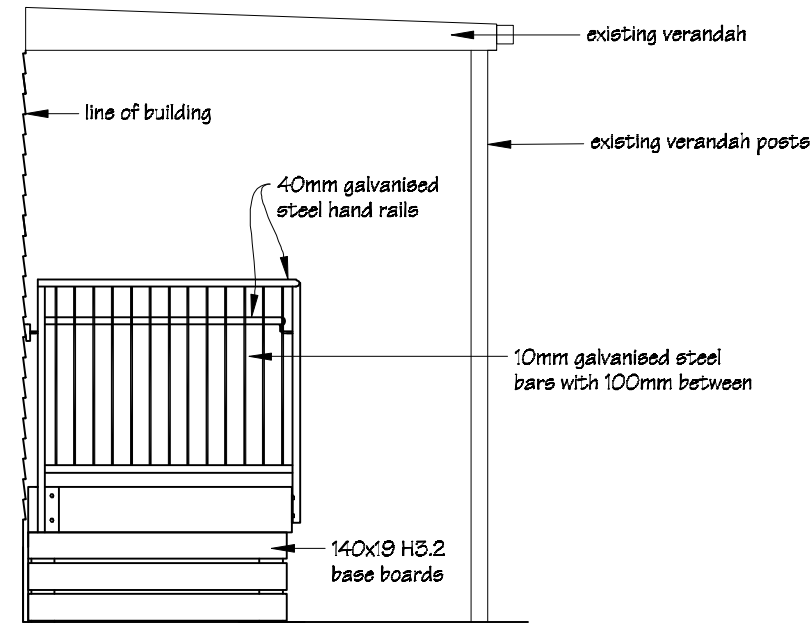


Cross Section B-B

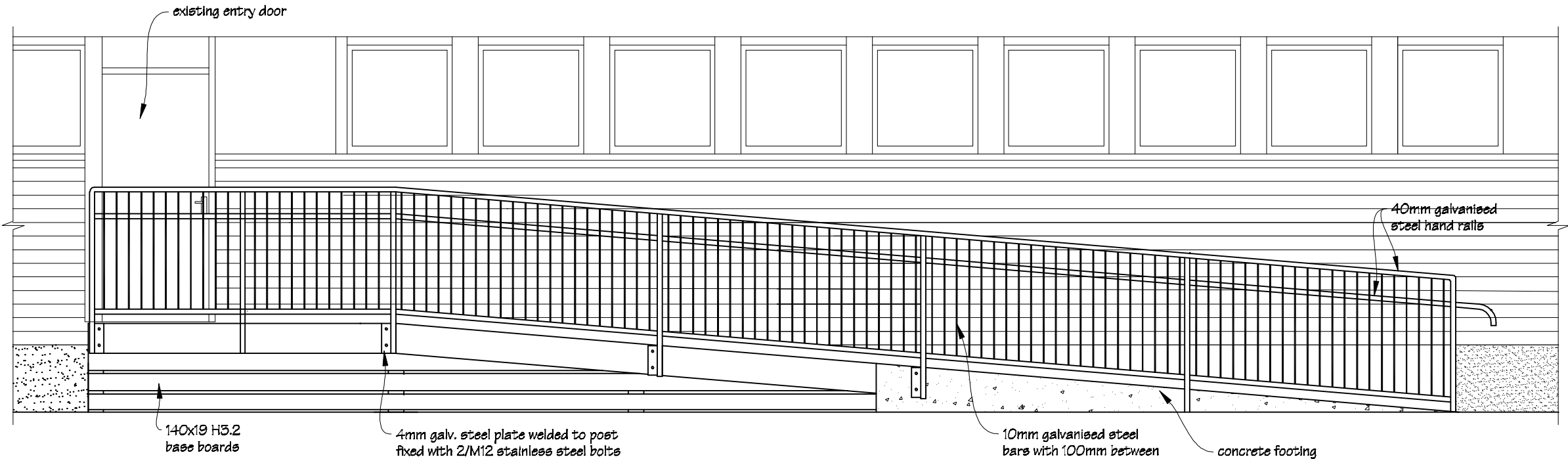
NOTES:
Ramp to have a maximum gradient of 1:12.
Hand rail & barrier details to match existing on site.

 IR Group Ltd <small>Design - Project Management - Planning</small>	Phone- Office 04 526-7711	Naenae Intermediate School Walters Street Naenae Lower Hutt	PROJECT G.S.E. Modifications	DRAWING TITLE Block D New Accessible Ramp Details	REVISIONS <i>No Date Description</i>	Scale	as shown	Pricing/Building Consent Drawings
	Mobile- Ian 021-427.347					Date	09/08/16	
	Mobile- Stephen 027-3355889					Original sheet size	A3	
	Email- ian@irgroup.co.nz					Drawn	S. T.	
	steve@irgroup.co.nz					Sheet No	3 of 7	
	www.irgroup.co.nz					Dwg Ref	5	
	Web-					<i>Do not scale from drawings. Check all dimensions on site.</i>		

ITEM 2
Block D
Accessible Ramp Details




End Elevation

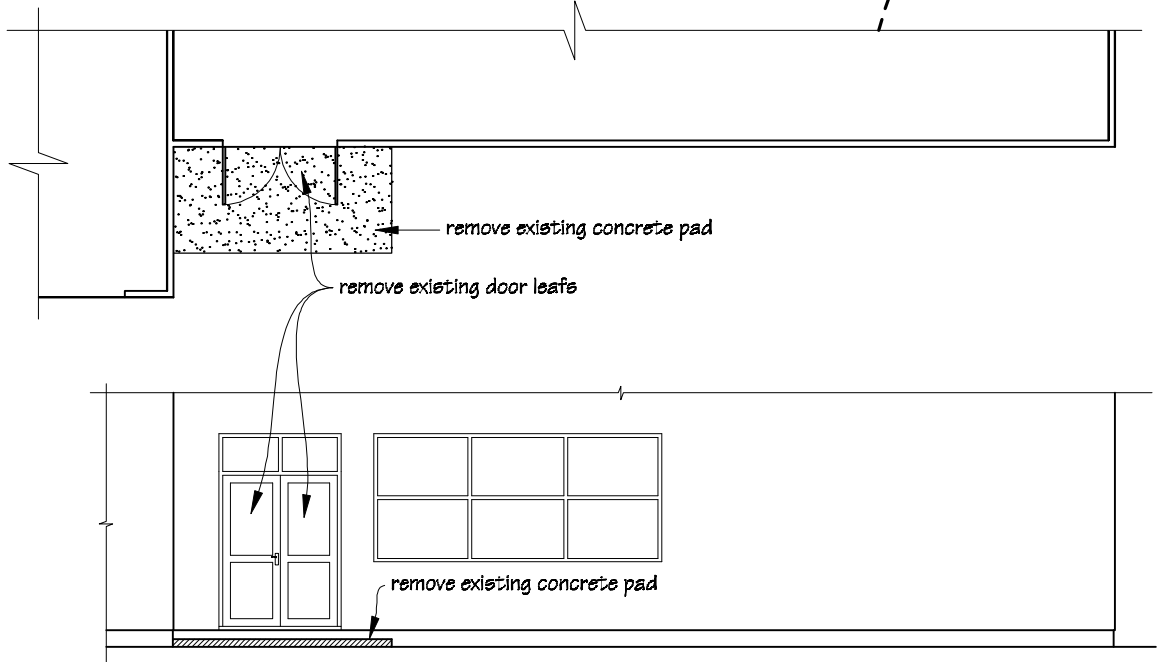
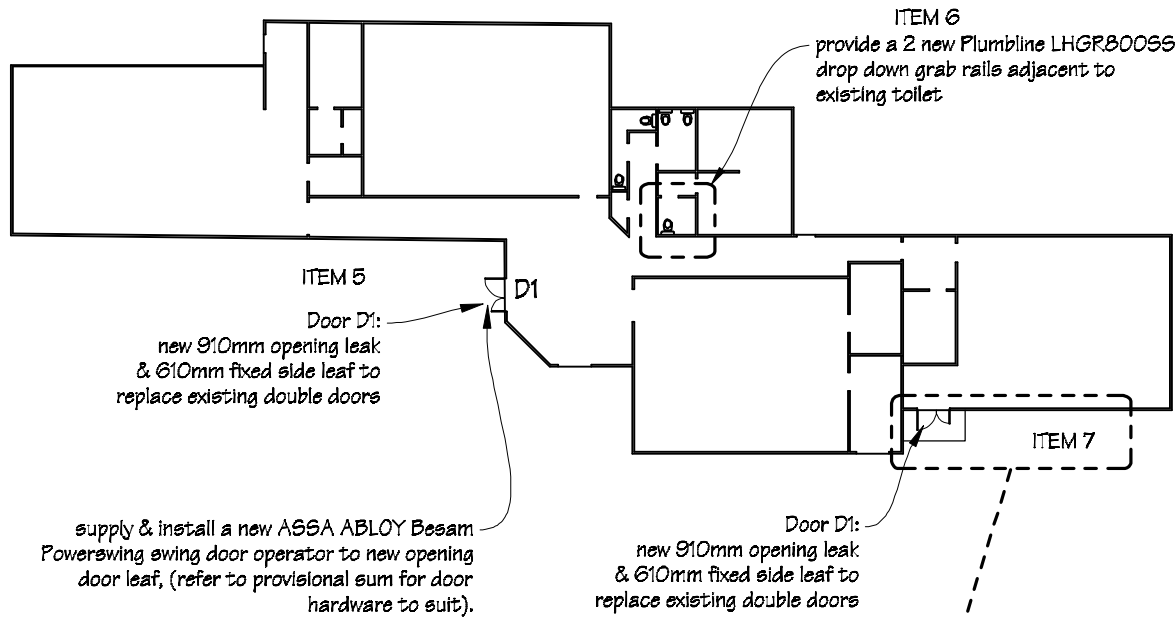


Side Elevation

NOTES:
Ramp to have a maximum gradient of 1:12.
Hand rail & barrier details to match existing
on site.

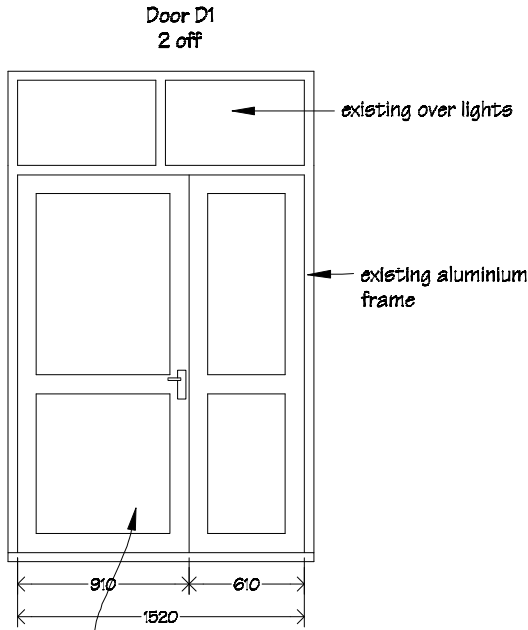
 IR Group Ltd <small>Design - Project Management - Planning</small>	Phone- Office 04 526-7711	Naenae Intermediate School Walters Street Naenae Lower Hutt	PROJECT G.S.E. Modifications	DRAWING TITLE Block D New Accessible Ramp Elevations	REVISIONS <table><tr><th>No</th><th>Date</th><th>Description</th></tr><tr><td> </td><td> </td><td> </td></tr></table>	No	Date	Description				Scale 1:40	Pricing/Building Consent Drawings
	No					Date	Description						
	Mobile- Ian 021-427.347					Date 09/08/16							
	Mobile- Stephen 027-3355889					Original sheet size A3	Do not scale from drawings. Check all dimensions on site.						
	Email- ian@irgroup.co.nz					Drawn S.T.							
	steve@irgroup.co.nz					Sheet No 4 of 7							
Web- www.irgroup.co.nz	Dwg Ref 4												

Technology Block Floor Plan
scale 1:350

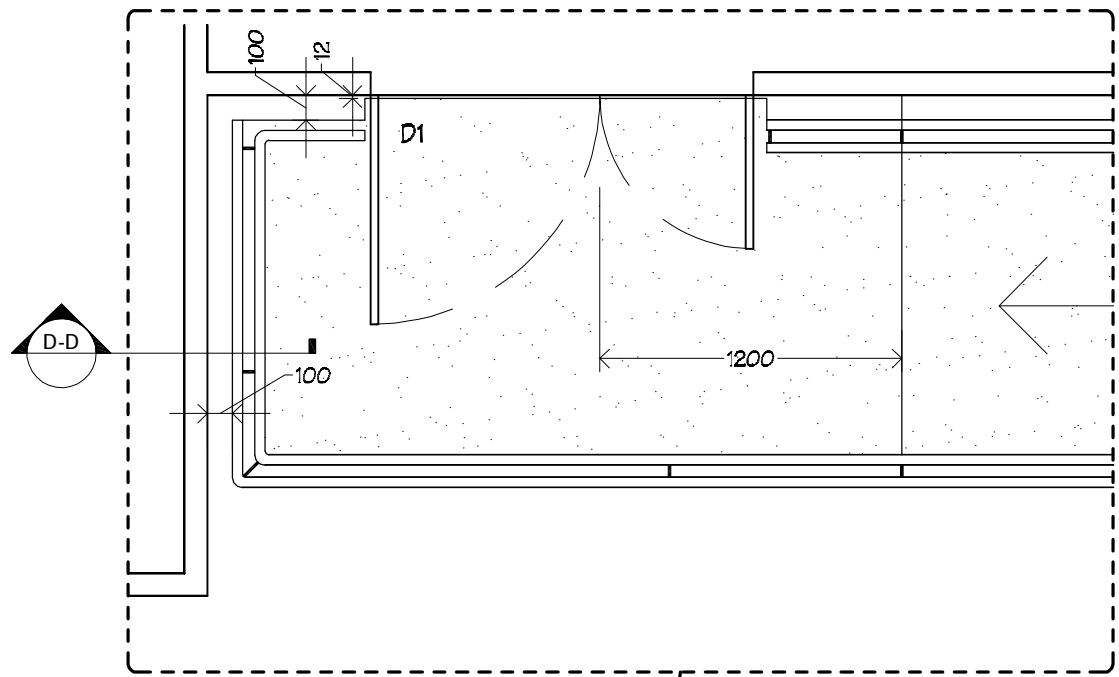


ITEM 7
Technology Block
Existing Part Floor Plan
scale 1:100

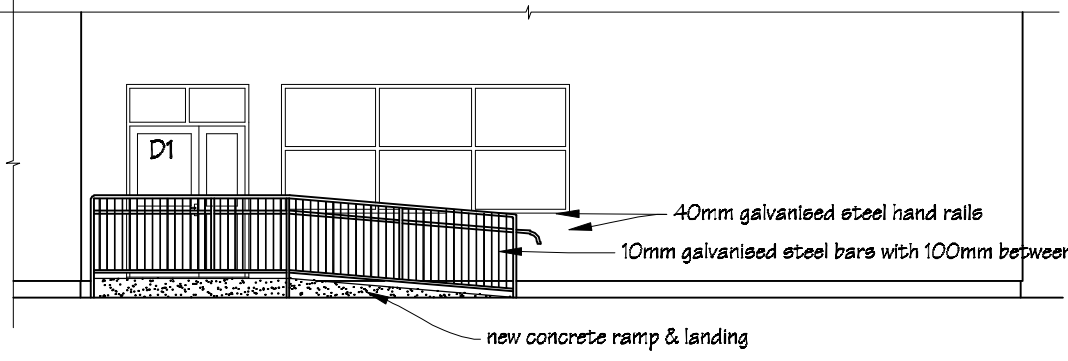
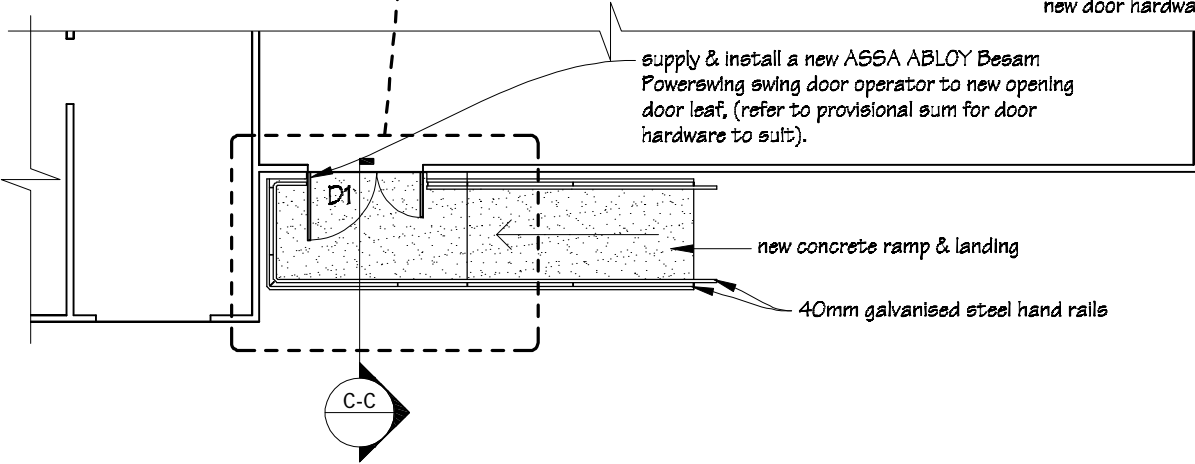
Technology Block
Entry Door Detail
scale 1:30




New 910mm opening leaf & 610mm fixed side leaf to replace existing double doors. Supply & install a new ASSA ABLOY Besam Powerswing swing door operator to new opening door leaf, (refer to provisional sum for new door hardware).



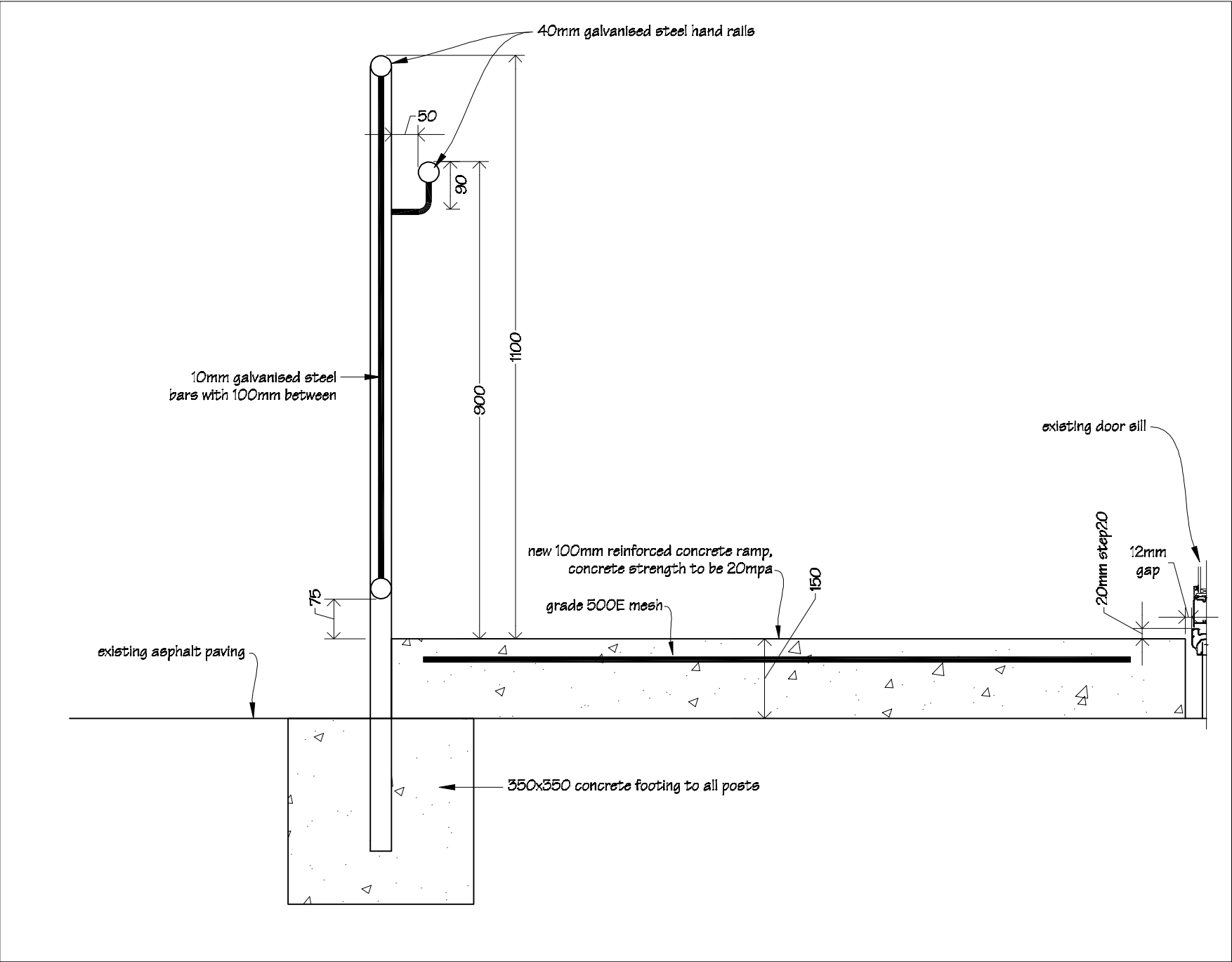
NOTES:
Ramp to have a maximum gradient of 1:12.
Hand rail & barrier details to match existing on site.



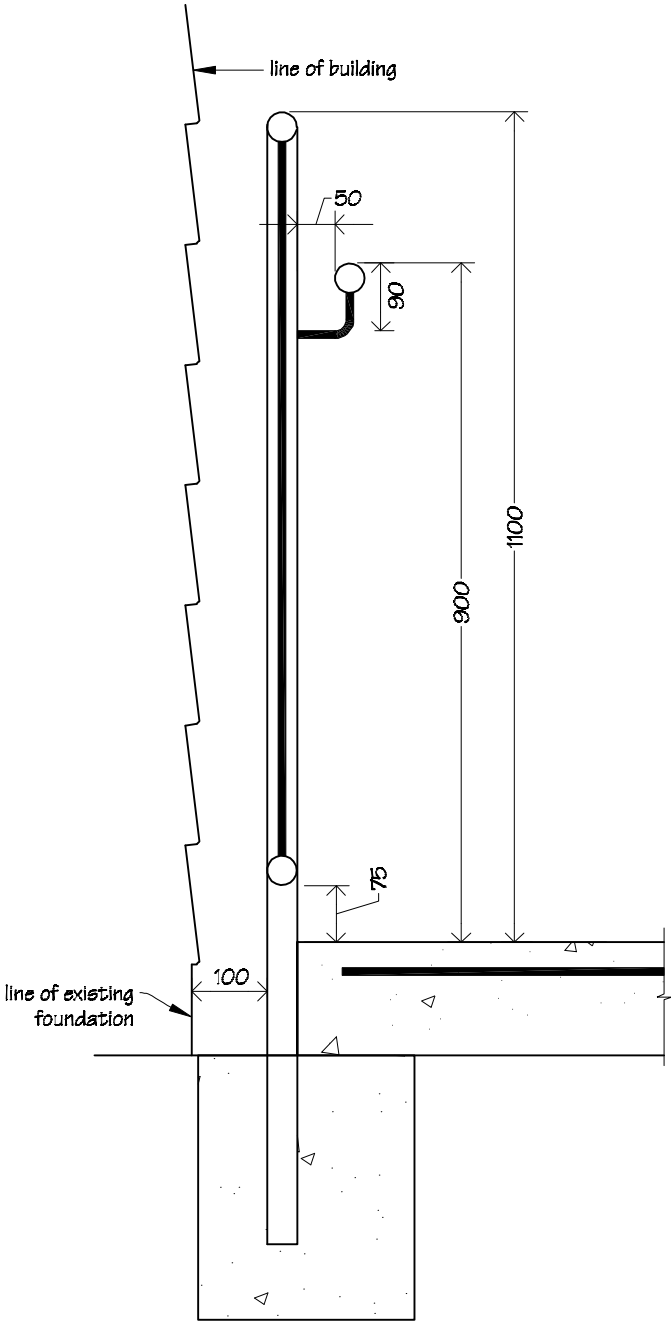
ITEM 7
Technology Block
Proposed Part Floor Plan
scale 1:100


 IR Group Ltd Design - Project Management - Planning	Phone- Office 04 526-7711 Mobile- Ian 021-427.347 Mobile- Stephen 027-3355889 Email- ian@irgroup.co.nz steve@irgroup.co.nz Web- www.irgroup.co.nz	Naenae Intermediate School Walters Street Naenae Lower Hutt	PROJECT G.S.E. Modifications	DRAWING TITLE Technical Block Accessible Ramp & New Doors	REVISIONS No Date Description	Scale	as shown	Pricing/Building Consent Drawings Do not scale from drawings. Check all dimensions on site.
						Date	09/08/16	
						Original sheet size	A3	
						Drawn	S. T.	
						Sheet No	5 of 7	
						Dwg Ref	5	

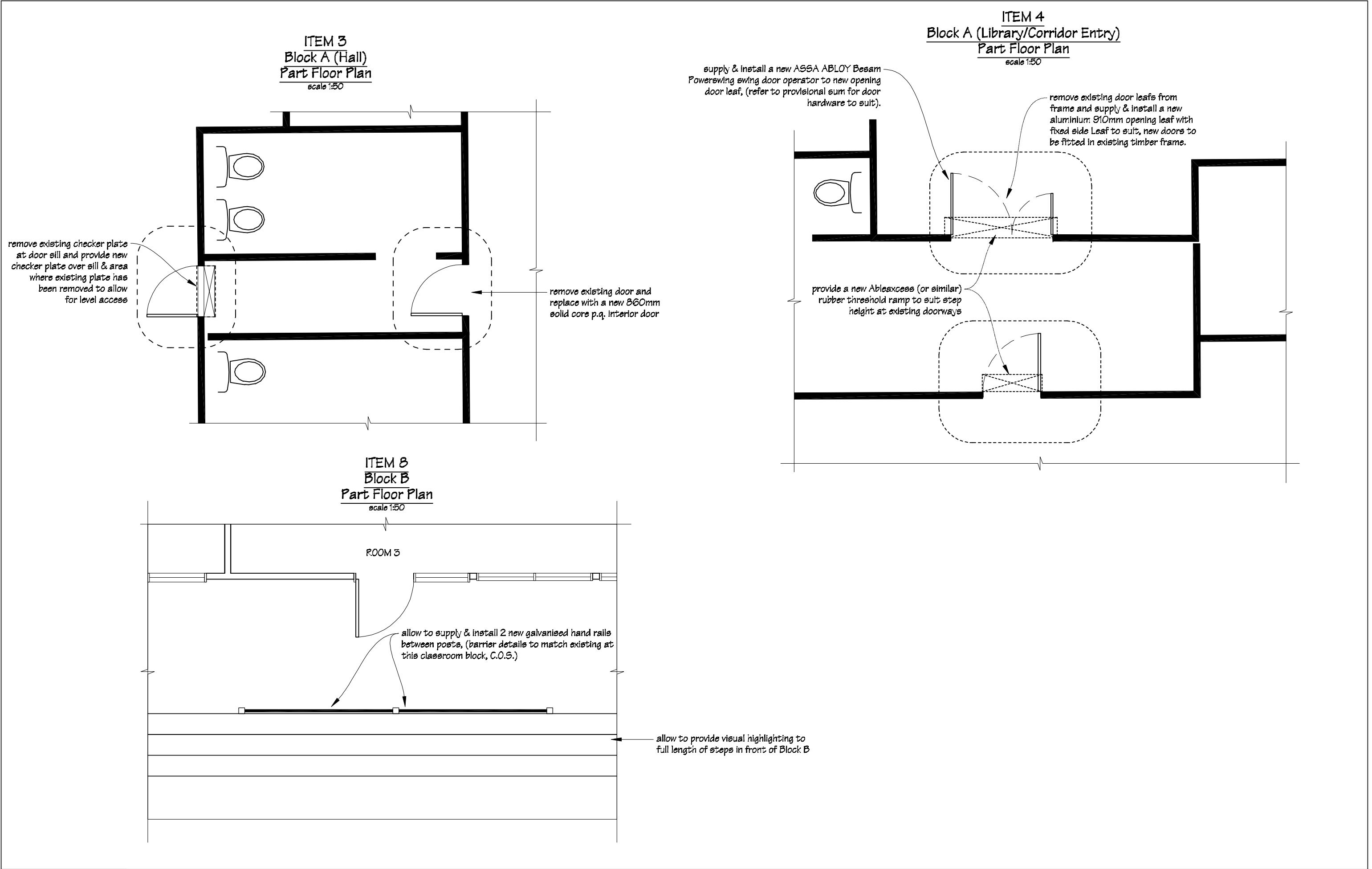
ITEM 7
Technology Block
Ramp Cross Section C-C
scale 1:10




ITEM 7
Technology Block
Ramp Cross Section D-D
scale 1:10



 IR Group Ltd Design - Project Management - Planning	Phone- Office 04 526-7711	Naenae Intermediate School Walters Street Naenae Lower Hutt	PROJECT G.S.E. Modifications	DRAWING TITLE Technical Block Ramp Cross Sections	REVISIONS No Date Description	Scale 1:10	Pricing/Building Consent Drawings Do not scale from drawings. Check all dimensions on site.
	Mobile- Ian 021-427.347					Date 09/08/16	
	Mobile- Stephen 027-3355889					Original sheet size A3	
	Email- ian@irgroup.co.nz					Drawn S.T.	
	Web- www.irgroup.co.nz					Sheet No 6 of 7	
						Dwg Ref 6	



 IR Group Ltd <small>Design - Project Management - Planning</small>	Phone- Office 04 526-7711	Naenae Intermediate School Walters Street Naenae Lower Hutt	PROJECT G.S.E. Modifications	DRAWING TITLE Blocks A & B Doors Ways & Barriers	REVISIONS	Scale 1:50	Pricing/Building Consent Drawings
	Mobile- Ian 021-427.347				No Date Description	Date 09/08/16	
	Mobile- Stephen 027-3355889					Original sheet size A3	
	Email- ian@irgroup.co.nz					Drawn S.T.	
	Web- www.irgroup.co.nz					Sheet No 7 of 7	
						Dwg Ref 7	